



Bhaca
by Andile Dyalvane



CONTEXT

ENQUIRIES
info@contextgallery.com

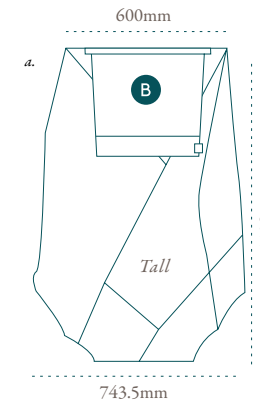
Tel. 404. 477. 3301
Tel. 800. 886.0867

contextgallery.com

The Bhaca is a completely personal and original range of stone planters that reflect ceramicist Andile Dyalvane's connection to his Xhosa roots while celebrating his mastery of an elemental material of choice – clay. Bhaca - meaning scarification - is a Xhosa traditional method of finely cutting skin (usually on the cheeks) to mark initiation, clan identification or healing. Andile's desire is to preserve and share his cultural roots of this ancient tradition by cutting into clay and pushing open the cuts where they intersect as if to open the flesh. The Bhaca has been electronically scanned and scaled from smaller clay vessels to form big impactful shapes made from stone that share this story with the world.

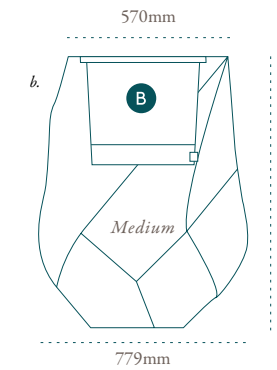


SPECIFICATIONS



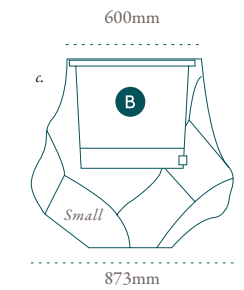
BHA11S

all stone
weight: 100kg (220lb)
inch: 29.3x23.6x44.8"



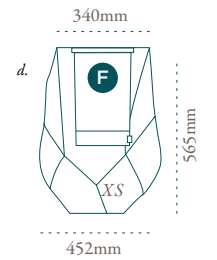
BHA09S

all stone
weight: 90kg (20lb)
inch: 30.7xx22.4x37.5"



BHA06S

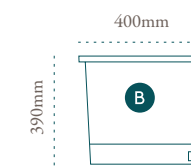
all stone
weight: 80kg (176lb)
inch: 26.7x23.6x34.3"



BHA05S

all stone
weight: 35kg (77lb)
inch: 17.8x13.4x22.2"

LINERS



round
soil: 77 gal | 271
water: 1.6 gal | 61



round
soil: 4.27 gal | 16.17
water: 0.92 gal | 3.51 l

CONTEXT

ENQUIRIES
info@contextgallery.com

Tel. 404. 477. 3301
Tel. 800. 886.0867

contextgallery.com

Finish Options



Black

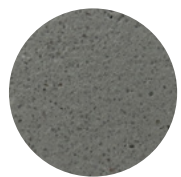
Sandstone

Terracotta

White

Brown

Grey



natural wood



oiled wood

CONTEXT

ENQUIRIES
 info@contextgallery.com
 Tel. 404. 477. 3301
 Tel. 800. 886.0867
 contextgallery.com

Liners

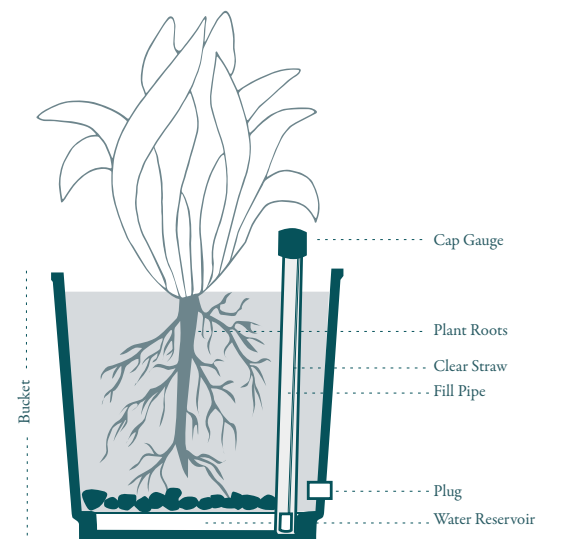


“Self-Watering” Liners

All Indigenous planters come with a liner for planting. The drawings show the sizes and capacities. These liners have been designed to house plants in proportion to the size of the planters. They contain a water reservoir at the base into which the roots grow. Using the process of “capillary action” the water is pushed up into the soil.

Water levels in the reservoir can be measured using the cap gauge and the liner has a plug which must be removed if the planter is exposed rainfall.

The liners usually need 14 weeks to integrate with the root system during which watering should be done the normal way onto the soil. Thereafter in typical conditions the reservoir only needs filling once or twice a month



Always use the planter in conjunction with the liner and remove the plug at the base of the liner and the base of the planter if the planters are going to receive rainfall.

