

Borea

DESIGNED BY PIERO LISSONI

Borea is a complete and eclectic collection of outdoor seats and tables designed by Piero Lissoni. The numerous pieces in the collection have in common tubular metal structures with a fluid and seamless design, without joints and interruptions, captivating and even emerging in the detail that extends to the base. The metal bending processes take advantage of techniques typically used in the aeronautical sector and transport them into the world of outdoor furniture bringing life to a collection with an unmistakable style. The collection includes two- and three-seater sofas, an oversized armchair, a low small armchair and a dining chair, all with stackable aluminum structures painted. Comfort is ensured by generous cushions, which are not only soft and relaxing but were also developed to be sustainable. Paddings are in fact made with polyester fiber filling coming from recycled PET plastic bottles enveloping a different densities polyurethane core. 510 1500 ml bottles are needed to create the padding for a Borea three-seater sofa, 390 bottles for the twoseater sofa, 280 for the armchair.

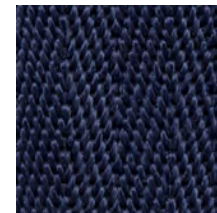
Comes with:
OFW48x48 - 45x45cm optional cushions (x2)

CONTEXT GALLERY

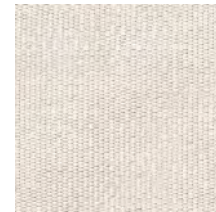
ENQUIRIES
info@contextgallery.com
Tel. 404. 477. 3301
Tel. 800. 886.0867
contextgallery.com



Seat & Back cushion:
Solano 810



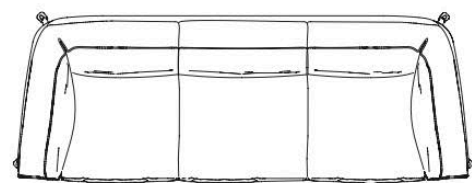
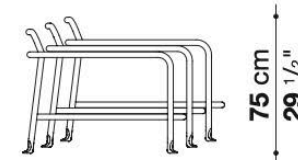
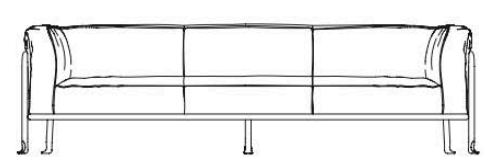
Profile:
Blue color



Optional cushions:
Aliseo 102



Frame: 0236B
Anthracite painted



3-Seater Sofa
(waterproof cover included)
Solano 810, Anthracite Painted Feet
*Comes with two optional cushions: Aliseo 102

