

KASTHALL

BROSCHYR
GUNILLA LAGERHEM
ULLBERG



PRODUCT SPECIFICATIONS BROSCHYR

Gunilla Lagerheim Ullberg's classic rug from the 1990s is back in our standard collection. Originally made as part of the Häggåpattern family, the rug was developed to inspire. Highlighting how typical Kasthall patterns and colors can be combined, the design showcased how you can add a personal and unique touch creating your own rug. Since then, the Broschyr has lived its own life – strongly associated with Kasthall's design heritage.

PRODUCT TYPE: Woven rug in pure wool

WEFT MATERIAL: 100% wool

WARP MATERIAL: 100% linen

TOTAL HEIGHT: approx. 5 mm

TOTAL WEIGHT: approx. 2200 g/m²

SIZE: Suggested sizes; 90x240 cm, 140x200 cm, 170x240 cm, 200x300 cm, 250x350 cm, 300x400 cm, 350x450 cm.

Custom made sizes: Choose width between 70–600 cm and any length.

ENVIRONMENT AND SUSTAINABILITY:

Meets the requirements for: BREEAM, Miljöbyggnad Guld, Green Label Plus, BVB: ID 111071, Recommended



Wear classification:
(EN 1307) Class 33
Commercial heavy



Luxury rating:
(EN 1307) LC1



Acoustics properties: (EN 1307)
Sound insulation approx. 24 dB



Acoustics properties:
Sound absorption α_w 0,15,



Suitable for Castor chair only
with additional backing:
(EN 1307) Occasional use



Thermal resistance:
(ISO 8302) 1,8 m² K/W



Fire classification:
(EN 13501) Cfl-s1

CONTEXT

ENQUIRIES
info@contextgallery.com
Tel. 404. 477. 3301
Tel. 800. 886.0867
contextgallery.com



CARE ADVICE WOVEN RUGS

To further extend the lifetime of your rug, Kasthall recommends a regular maintenance so that the rug may retain its shape and appearance. If you have a light, single-colour rug you will need to care for it more often than a darker, patterned rug. It is also a good idea to use a rug underlay to prolong the life of your woven rug and prevent it from slipping on any type of floor. Thorough vacuuming is the best, most economical and environmentally friendly method of cleaning. Beating or shaking a rug may damage the fibers. It is most efficient to vacuum the rug one direction at a time.

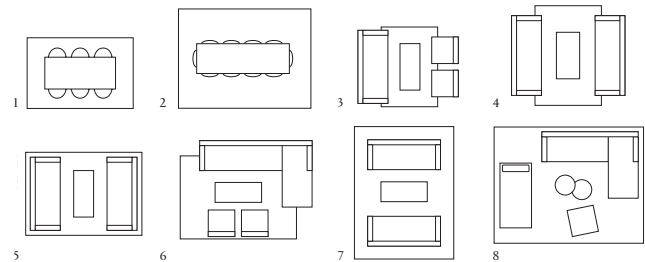
CLEANING ADVICE

We recommend that the rug is cleaned by a professional cleaner, using the extraction method on a flat surface. The quantity and temperature of the water will depend on the material. Good ventilation during the drying process is essential. Shrinkage will be about 3–5%. Kasthall's rugs are not to be machine-washed or dry-cleaned.

At kasthall.com you can read more about our materials, how to look after your rug and our stain guide.

CHOOSING A RUG

Choose the characteristics of the rug, its colour and design to suit the space in which it will be laid. If it is to be laid in a hall, for example, you may choose a type of rug that is more resistant to wear, and a colour that is a little darker and dirt-tolerant. Use a rug as a means of bringing together the rest of the interior. Decide whether you want to place a sofa on the rug or at its edge. If a rug is to be placed underneath a dining table, add at least 60 cm all round the table to allow space for pulling out the chairs. Woven rugs are suitable for most settings, both public and private. Ideal for use in domestic settings such as dining rooms, halls and kitchens, and in retail environments, conference premises and corridors. May also be laid as a carpet.



Examples of commonly used rug sizes:

- Dining table with 6 chairs: rug size 200x300 cm
- Dining table with 10 chairs: rug size 300x400 cm
- Three-seat couch with armchairs: rug size 170x240 cm
- Three-seat double couch: rug size 200x300 cm
- Three-seat double couch: rug size 250x350 cm
- Corner sofa with armchairs: rug size 250x350 cm
- Three-seat double couch: rug size 300x400 cm
- Corner sofa with daybed and armchair: rug size 350x450 cm

SUSTAINABILITY AT KASTHALL

Sustainability is rooted in Kasthall's history. It was there when we started and continues today in our work and ambition to contribute to a sustainable future. It is evident in our circular approach to design and in a fully-traceable supply chain to reduce our impact on people and planet. It is part of our commitment to local Swedish production and a made-to-order system that creates less waste. We also use third-party environmental declarations and assessment to ensure reliability. Read more about our sustainability work and philosophy at kasthall.com.

OTHER INFORMATION

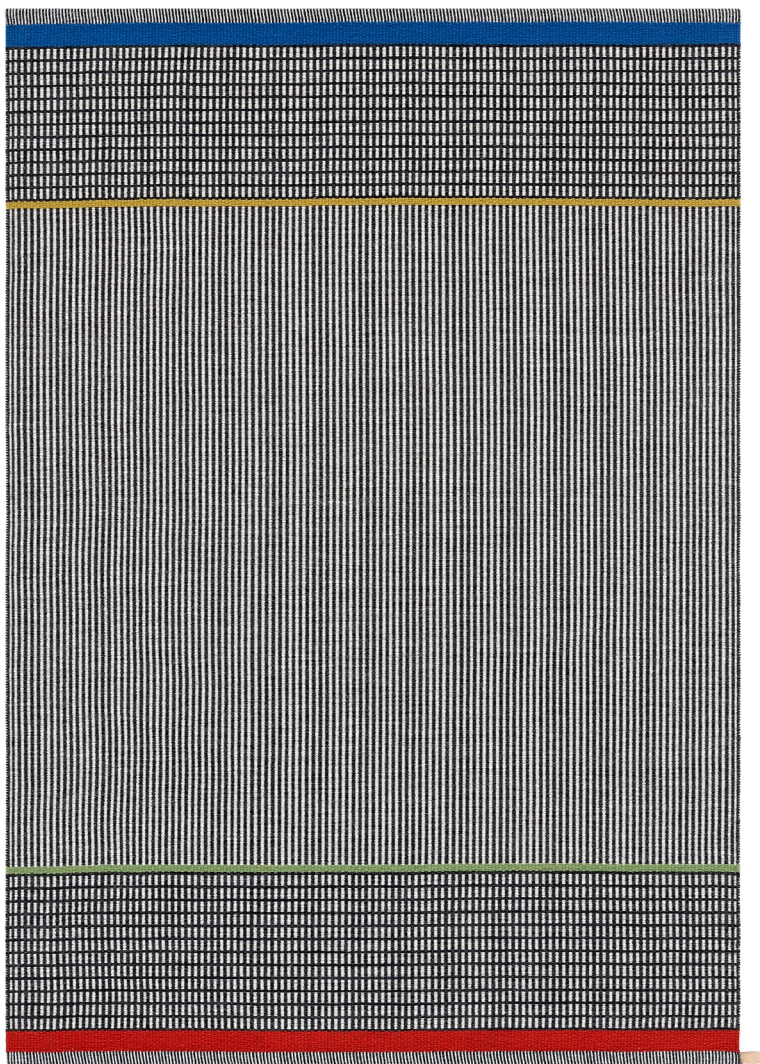
- Depending on the materials used and the rug-making process, dimensions may vary by up to 5% so please state maximum or minimum dimensions when placing your order.
- Note that all rugs from Kasthall are made from natural materials. Variations in color and texture can therefore arise between batches of yarn and dye baths.
- Rugs should be laid on an underlay that prevents them from moving on all types of flooring. This extends the life of the rug and reduce the risk of slipping.
- The use of backing fixes the dimensions of a rug and extends its life. This is recommended for rugs that are wider than 200 cm and/or those larger than six sqm.

BROSCHYR

Design GUNILLA LAGERHEM ULLBERG
Woven rug in pure wool



Broschyr



Rug 170x240 cm, Broschyr

KASTHALL HEAD QUARTER

Fritslavägen 42 | 511 37 Kinna, Sweden | Phone +46(0)320 205 900 | info@kasthall.com

For the latest updates of our collection, please visit www.kasthall.com

All the designs shown here are protected under law. Kasthall have the property rights and distribution rights worldwide. Copying will be prosecuted.



KASTHALL.COM