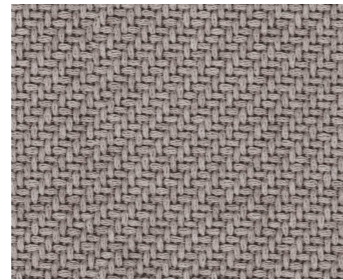


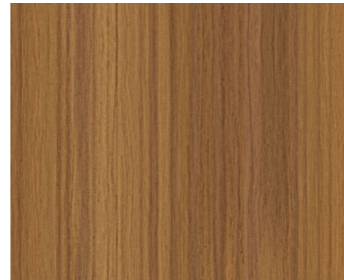
# Doron Hotel Outdoor Chair

Designed Charlotte Perriand

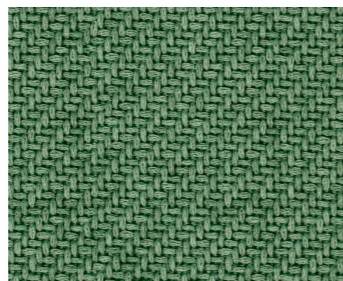
The Doron Hotel Outdoor chair was designed in 1947 by Charlotte Perriand, a real mountain lover, for the winter sports resort of Méribel Les Allues and for Hôtel Doron, one of the first chalet-hotels, in the same location. The French designer always had a special and profound relationship with nature; in fact, she was one of the first to explore the relationship between man and his surrounding environment, seeking natural materials to use in her projects. Comfortable, textural and pleasant to the touch, the Doron Hotel chair, already available in an indoor version, now comes in a solid teak outdoor version with the same soft and simple lines. The seat is padded with polyurethane foam covered with waterproof cloth. It can be paired with Charlotte Perriand's Table à Plateau Interchangeable outdoor.



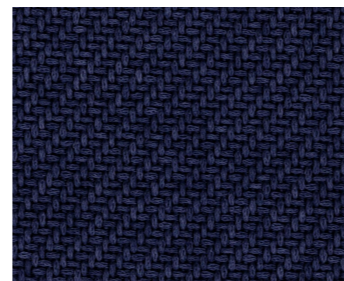
13L363 Kemi Grigio



Natural Teak



13L366 Kemi Smeraldo



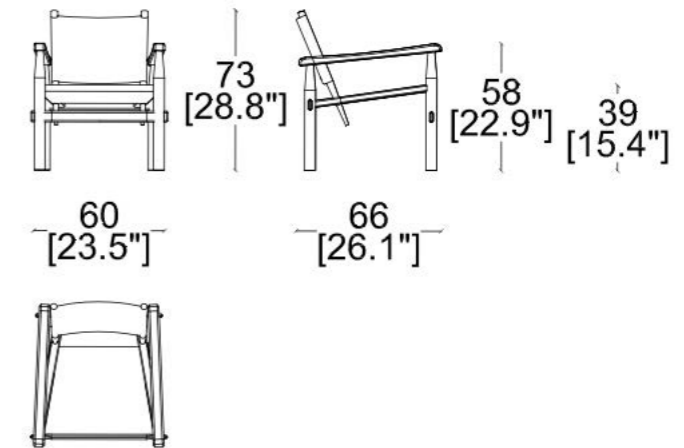
13L371 Kemi Blue Navy

## available combinations

- Natural Teak frame with seat and back upholstered in Kemi Grigio
- Natural Teak frame with seat and back upholstered in Kemi Smeraldo
- Natural Teak frame with seat and back upholstered in Kemi Blue Navy



## available compositions



## CONTEXT GALLERY

ENQUIRIES  
info@contextgallery.com  
Tel. 404. 477. 3301  
Tel. 800. 886.0867  
contextgallery.com

Cassina