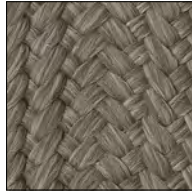


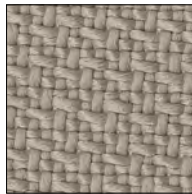
— Erica

DESIGNED BY ANTONIO CITTERIO

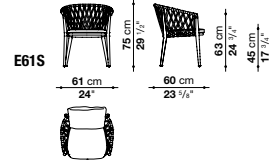
Sofas, armchair, small armchair and chair, including a stackable version, offer a technological blend of extruded and die-cast aluminium elements. Their lightness and design makes them ideal for both public and residential settings, featuring seat and back cushions for ergonomic comfort together with strength for outdoor use. Small armchair and chair with Tortora frame and interlacing are in the quick ship program.



Tortora



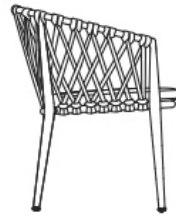
Silea 280



E61S



75 cm
29 1/2"



63 cm
24 3/4"

45 cm
17 3/4"

61 cm
24"

60 cm
23 5/8"

