

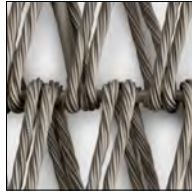
Fat-Sofa Outdoor

DESIGNED BY PATRICIA URQUIOLA

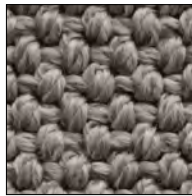
The rounded, soft and sinuous shapes of the Fat-Sofa seating system are the basis for the new outdoor version, characterized by a brand new interlacing design. Its fully padded seat is accompanied by a metal frame backrest that supports the original weave, creating a special play of fullness and emptiness.

The large weave pattern, made of tortora coloured twisted polyethylene fibres, makes the design unique and respects the designer's idea of lightness, transparency and puts the furnishings in an open "dialogue" with the surrounding environment.

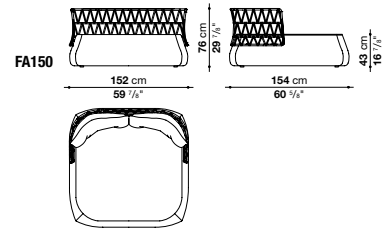
Fat-Sofa Outdoor consists of four types, ranging from the linear sofa to a chaise longue, to two height variants in the armchairs.



Tortora



Lesia 251

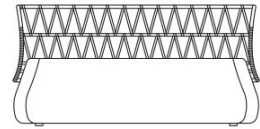


Comes with pair of back cushions in Lesia 251 and four 18 7/8" x 18 7/8" pillows as shown on this page.



Note: Outdoor covers available for this item in stock

FA150



152 cm
59 ⁷/₈"

