



Giulia

Designer: Gianfranco Frattini
Year: (1957) 2016

A reissue of an original 1957 design by Gianfranco Frattini, the shape and spirit of Giulia are as contemporary today as ever. The armchair with footrest is the perfect combination of beauty, comfort and harmony. The shell, which echoes and renews the shapes of a classic reading chair, stands on a wooden base, essential in defining the aesthetic of this design classic, which Frattini aptly dedicated to the wife of his teacher and guide, Gio Ponti.

Developed by Tacchini in Italy

Dimensions (cm)

Cod. OGIU86

Cod. OGIUP57



W 86 D 95 cm
H 104 H seat 43 cm

W 57 D 51 cm
H 42 cm

Non-removable
covers

CAD Files:
3D (.dwg, .3ds)
2D (.dwg)

Download CAD
files at tacchini.it/en/downloads

CONTEXT

ENQUIRIES
info@contextgallery.com

Tel. 404. 477. 3301
Tel. 800. 886.0867

contextgallery.com

Materials description

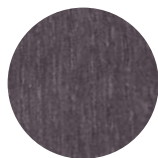
Internal frame: 30 mm thick fir plywood.

Padding: differentiated-density polyurethane foam.

Base: open pore stained solid ash wood.

Base

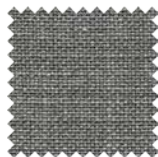
T43
Dark Walnut



T49
Grey

Suggested upholsteries

Early



Thesium



Divina



Super Leather

CONTEXT

ENQUIRIES
info@contextgallery.com

Tel. 404. 477. 3301
Tel. 800. 886.0867

contextgallery.com