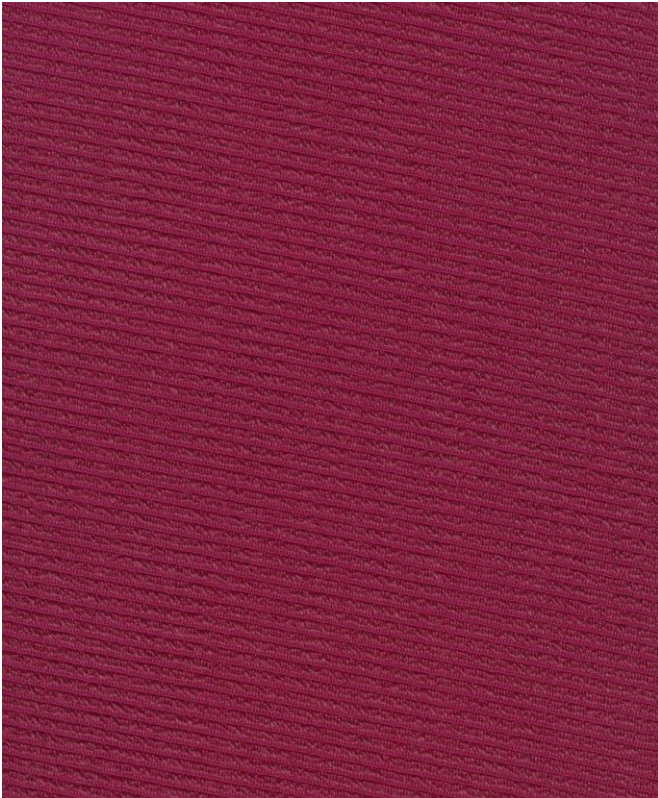


## KVADRAT/RAF SIMONS



Aaren

Design: Raf Simons

Type: Upholstery

Composition: 85% new wool, worsted, 5% nylon,  
10% viscose

Yarn type: Worsted

Binding: Twill

Width: Approx. 140 cm, 55 inches

Weight: Approx. 740 g/lin.m, 24 oz/ly

Repeat: None

Foreign fibers may occur in light colours

Colour difference may occur

Cleaning: Vacuum clean frequently, ideally every week.  
Remove stains as soon as they occur, with clean warm water or  
sparkling water. Extraction clean when necessary. Pay attention to  
temperature and amount of cleaning fluid.  
Extraction cleaning might dissolve water based glue. Pay attention to  
temperature and amount of cleaning fluid.

Disinfection, see kvadrat.dk

More info: Care and maintenance kvadrat.dk



10 year  
warranty



### Abrasion

Approx. 30.000 Martindale rubs, EN ISO 12947

*Abrasion test results exceeding ACT performance guidelines  
are not an indicator of product lifespan. Multiple factors affect fabric  
durability and appearance retention*

### Pilling

Note 3-4, EN ISO 12945

### Seam slippage

Seam parallel to warp: 5.5 mm parallel to weft: 4.5 mm  
EN ISO 13 936-2 180 Newton

### Snagging

Note 1, ICI Test method FAB 29, Tumble-Box

### Lightfastness

Note 4-7 ISO 105-B02

### Fastness to rubbing

Dry note 3-5 ISO 105-X12

Wet note 3-5 ISO 105-X12

## CONTEXT

ENQUIRIES  
info@contextgallery.com

Tel. 404. 477. 3301  
Tel. 800. 886.0867

contextgallery.com  
contextcontract.com

### Flame resistance

AS/NZS 3837 class 2  
ASTM E84 Class B Adhered  
BS 5852 Crib 5 with treatment \*  
BS 5852 Part 1  
EN 1021-1/2  
IMO FTP Code 2010 Part 8  
SN 198 898 5.3 with treatment \*  
UNI 9175 1IM  
US Cal. Bull. 117-2013

Free from added flame retardant chemicals as standard

*\* To pass this test flame retardant treatment is necessary.  
We are looking into more environmentally friendly alternatives  
but for now, the external finisher may use a treatment  
containing halogen-based flame retardants*

### ACT Guidelines Woven fabrics

#### Flammability

US Cal. Bull. 117-2013

#### Dry & Wet Crocking AATCC 8

Dry Crocking: Grade 3.0-5.0  
Wet Crocking: Grade 3.0-5.0

#### Colour Fastness to Light AATCC 16

Grade 4.5 minimum 40 hours  
Colour 633 grade 2.0

#### Physical properties

Pilling Class 3-4 ASTM D4970  
Breaking Strength warp 163 / weft 199 lbs, ASTM D5034  
Seam Slippage warp 25 / weft 119 lbs, ASTM D4034

#### Abrasion ASTM D4966

30.000 cycles Martindale – Low Traffic / Private Spaces

#### Benefits of wool

Wool is a renewable resource  
Wool is very comfortable because of its ability to absorb/  
give off humidity  
Wool is flame retardant  
Wool is biodegradable  
Wool is naturally soil resistant  
Wool ages with grace

#### Quality benefits

Flame retardant

### Environmental benefits

Follow the EU Ecolabel dye restrictions incl. AZO dye  
and heavy metal restrictions  
No use of halogen based flame retardants (incl. brominated  
and chlorinated)  
REACH compliant  
Californian Proposition 65 list compliant  
LBC Red list compliant  
Healthier Hospitals compliant  
No content of PFCs or 'PFAS'

### Green building certificates

Greenguard Gold: Low chemical emission  
Environmental Product Declaration (EPD): Based on a LCA following  
EN 15804 and follow the standard of ISO 14040  
Health Product Declaration (HPD): Declaring textile content and  
substance

### Country of origin

Norway

### Launch

2023

### Warranty

10 years. See terms and conditions on kvadrat.dk

Kvadrat packaging and cardboard is recyclable. Cardboard material is  
FSC certified and / or contains recycled content.

For further information  
kvadrat.dk