

Hallingdal 65

Abrasion

Approx. 100.000 Martindale rubs, EN ISO 12947

Abrasion test results exceeding ACT performance guidelines are not an indicator of product lifespan. Multiple factors affect fabric durability and appearance retention

Pilling

Note 3-4, EN ISO 12945

Seam slippage

Seam parallel to warp: 4.5 mm parallel to weft: 4.0 mm
EN ISO 13 936-2 180 Newton

Lightfastness

Note 5-7 ISO 105-B02

Fastness to rubbing

Dry note 4-5 ISO 105-X12

Wet note 3-5 ISO 105-X12

Absorption

0.45/Class D (flat), 0.70/Class C (waved) EN ISO 354

Airflow

182 Pa s/m EN 29053

Flame resistance

AS/NZS 1530.3

AS/NZS 3837 class 2

ASTM E84 Class A Adhered

ASTM E84 Class B Unadhered

BS 5852 Crib 5

BS 5852 part 1

EN 1021-1/2

GB 50222 B1 with treatment (Chinese) *

IMO FTP Code 2010 Part 8

NF D 60 013

NFPA 260

ÖNORM B1/Q1

SN 198 898 5.3 with treatment *

UNI 9175 1IM

US Cal. Bull. 117-2013

Free from added flame retardant chemicals as standard

** To pass this test flame retardant treatment is necessary. We are looking into more environmentally friendly alternatives but for now, the external finisher may use a treatment containing halogen-based flame retardants*

Hallingdal 65

Design: Nanna Ditzel

Type: Upholstery

Composition: 70% new wool, 30% viscose

Yarn type: Woolen

Binding: Plain

Width: Approx. 130 cm, 51 inches

Weight: Approx. 795 g/lin.m, 25.6 oz/ly

Repeat: None

Foreign fibers may occur in light colours

Colour difference may occur

Cleaning: Vacuum clean frequently, ideally every week. Remove stains as soon as they occur, with clean warm water or sparkling water. Extraction clean when necessary. Extraction cleaning might dissolve water-based glue. Pay attention to temperature and amount of cleaning fluid.

Disinfection, see kvadrat.dk

More info: Care and maintenance kvadrat.dk



10 year warranty



CONTEXT

ENQUIRIES

info@contextgallery.com

Tel. 404. 477. 3301

Tel. 800. 886.0867

contextgallery.com

kvadrat

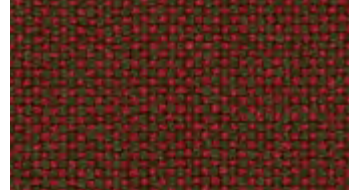
Hallingdal 65



573



563



660



694



687



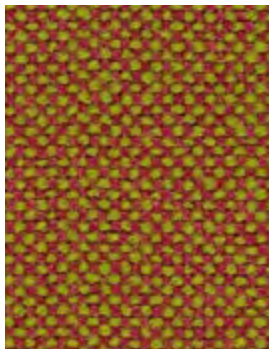
674



590



547



526



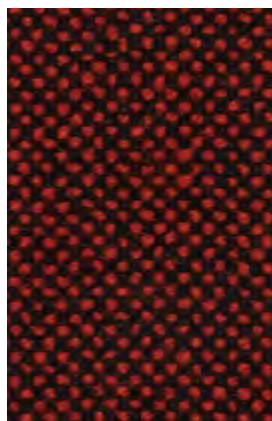
657



680



600



596

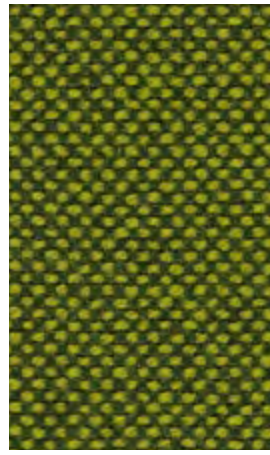
Hallingdal 65



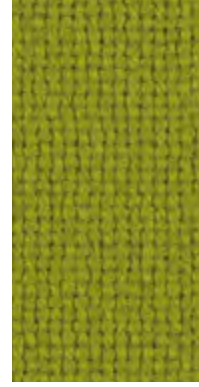
944



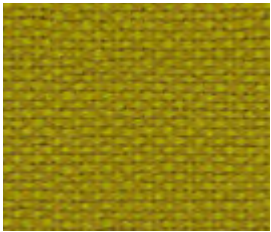
960



980



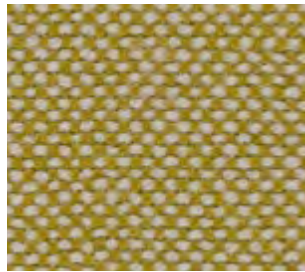
907



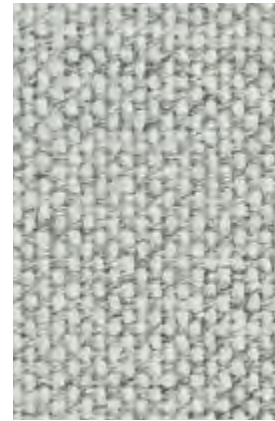
420



457



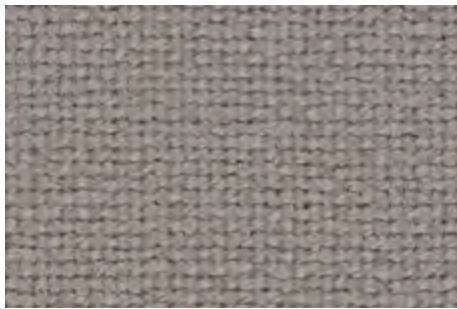
407



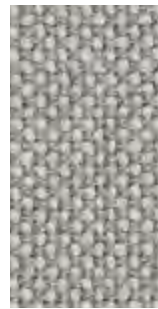
110



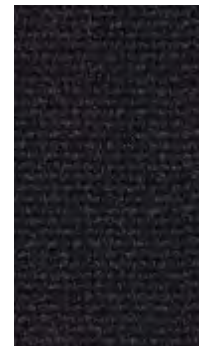
103



113



123



190



166



180



173



143

Hallingdal 65



100



200



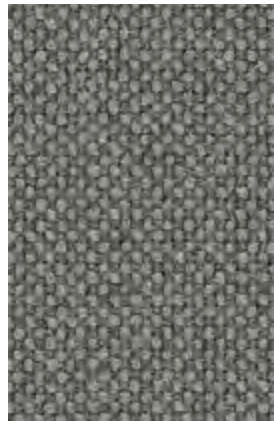
227



224



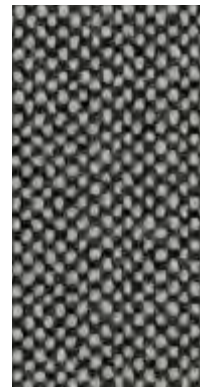
220



153



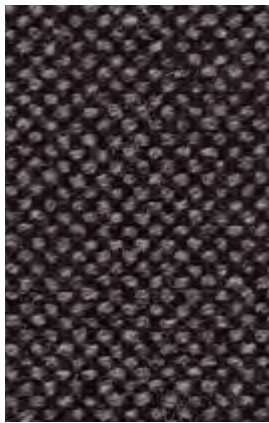
116



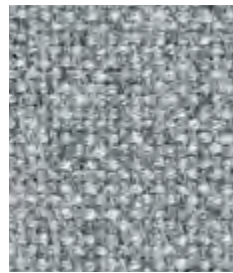
126



376



368



130



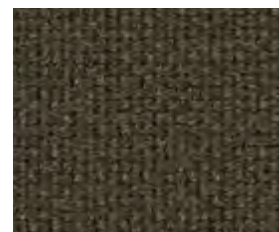
270



350

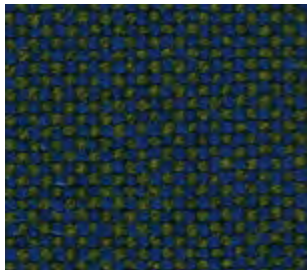


370

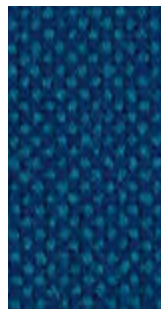


390

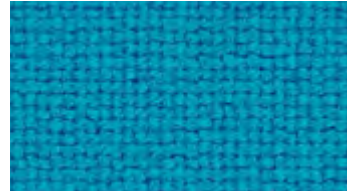
Hallingdal 65



890



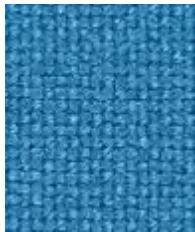
810



850



840



723



733



750



968



702



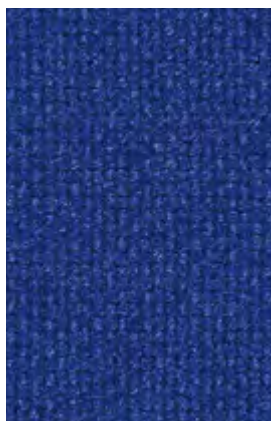
764



754



773



753



763