



Maple

Design: Åsa Pårsom

Type: Upholstery, low traffic contract and soft seating.

Due to the irregular nature of the chenille yarn, the colour and look will vary, contributing to the natural characteristics of the textile. The pile of the chenille yarn is multi directional giving a varying light reflection over the surface. Colours will appear within a range of tones according to the varying light reflection. The different directions of the pile appear randomly, giving each piece its own characteristics.

Composition: 81% viscose, 15% linen, 4% polyester, non-woven polyester backing

Yarn type: Spun chenille yarns

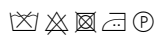
Binding: Plain

Width: Approx. 140 cm, 55 inches

Weight: Approx. 910 g/lin.m, 29.2 oz/ly

Repeat: None

Colour difference may occur



10 year warranty



CONTEXT

ENQUIRIES

info@contextgallery.com

Tel. 404. 477. 3301

Tel. 800. 886.0867

contextgallery.com

kvadrat

Maple

Abrasion

Approx. 30.000 Martindale rubs, EN ISO 12947

Pilling

Note 4-5, EN ISO 12945

Seam slippage

Seam parallel to warp: 2.0 mm parallel to weft: 2.0 mm
EN ISO 13 936-2 180 Newton

Lightfastness

Note 5-7 ISO 105-B02

Fastness to rubbing

Dry note 4-5 ISO 105-X12

Wet note 4-5 ISO 105-X12

Absorption

0.45/Class D (flat), 0.70/Class C (waved) EN ISO 354

Airflow

7455 Pa s/m EN 29053

Flame resistance

AS/NZS 1530.3

AS/NZS 3837 class 2

BS 5852 crib 5 with treatment *

BS 5852 part 1

EN 1021-1/2

IMO FTP Code 2010 Part 8

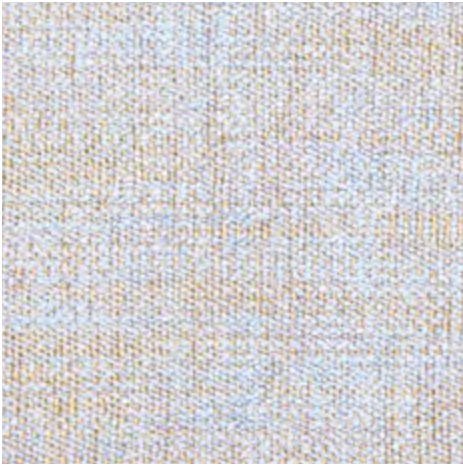
NFPA 260

US Cal. Bull. 117-2013

Free from added flame retardant chemicals as standard

** To pass this test flame retardant treatment is necessary. We are looking into more environmentally friendly alternatives but for now, the external finisher may use a treatment containing halogen-based flame retardants*

Maple



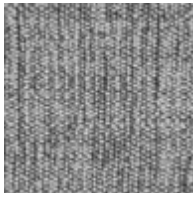
732



832



542



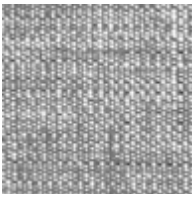
162



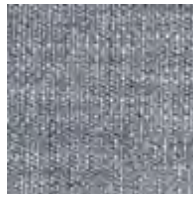
742



722



132



762



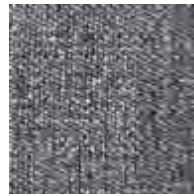
792



112



102



192

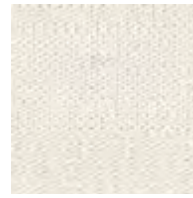
Maple



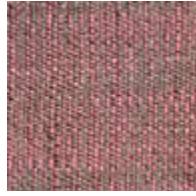
342



332



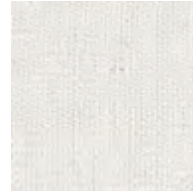
212



662



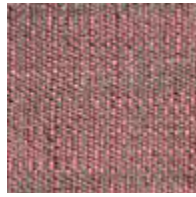
222



202



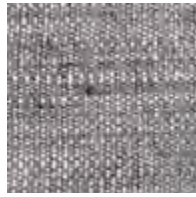
362



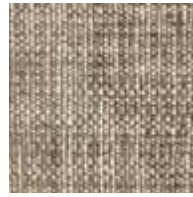
562



232



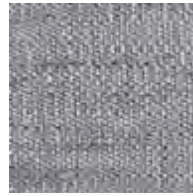
862



352



392



172



142