



## Molly 2

### Abrasion

Approx. 75.000 Martindale rubs, EN ISO 12947

*Abrasion test results exceeding ACT performance guidelines are not an indicator of product lifespan. Multiple factors affect fabric durability and appearance retention*

### Pilling

Note 3-4, EN ISO 12945

### Seam slippage

Various results depending on construction  
EN ISO 13 936-2 180 Newton

### Snagging

Note 1 (Note 1-4, 1 best note) ICI Test method FAB 29, Tumble-Box

### Lightfastness

Note 4-7 ISO 105-B02

### Fastness to rubbing

Dry note 4-5 ISO 105-X12  
Wet note 4-5 ISO 105-X12

### Flame resistance

BS 5852 crib 5 with treatment \*  
BS 5852 part 1  
EN 1021-1/2  
IMO FTP Code 2010 Part 8  
NF D 60 013  
NFPA 260  
ÖNORM B1/Q1  
SN 198 898 5.3 with treatment \*  
UNI 9175 1IM  
US Cal. Bull. 117-2013

Free from added flame retardant chemicals as standard

*\* To pass this test flame retardant treatment is necessary. We are looking into more environmentally friendly alternatives but for now, the external finisher may use a treatment containing halogen-based flame retardants*

### Molly 2

Design: Åsa Päsön

Type: Upholstery

Composition: 100% new wool

Yarn type: Worsted

Binding: Plain variants

Width: Approx. 140 cm, 55 inches

Weight: Approx. 690 g/lin.m, 22 oz/ly

Repeat: None

Colour difference will occur

Cleaning: Vacuum clean frequently, ideally every week. Remove stains as soon as they occur, with clean warm water or sparkling water. Extraction clean when necessary. Extraction cleaning might dissolve water-based glue. Pay attention to temperature and amount of cleaning fluid.

Disinfection, see kvadrat.dk

More info: Care and maintenance kvadrat.dk



10 year warranty



## CONTEXT

ENQUIRIES

info@contextgallery.com

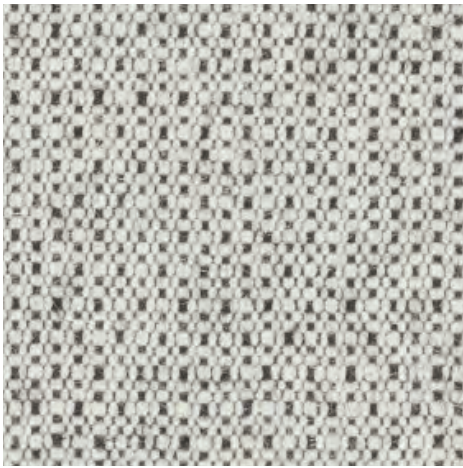
Tel. 404. 477. 3301

Tel. 800. 886.0867

contextgallery.com

# kvadrat

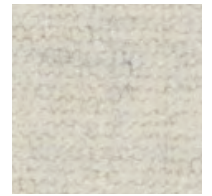
Molly 2



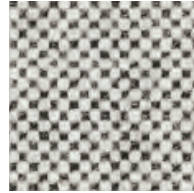
116



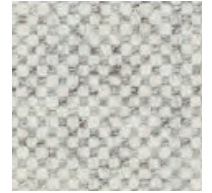
114



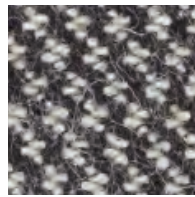
110



122



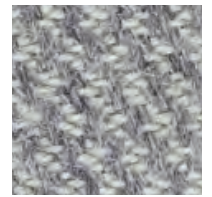
112



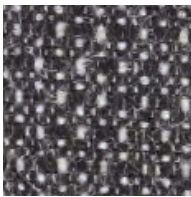
194



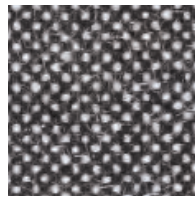
160



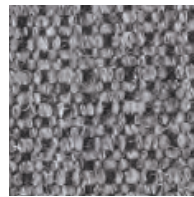
154



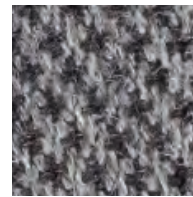
196



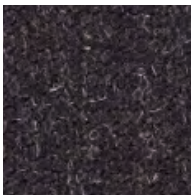
192



166



164



190



170



152