



## Raas

### Abrasion

Approx. 100.000 Martindale rubs, EN ISO 12947

*Abrasion test results exceeding ACT performance guidelines are not an indicator of product lifespan. Multiple factors affect fabric durability and appearance retention*

### Pilling

Note 4-5, EN ISO 12945

### Seam slippage

Seam parallel to warp: 5.7 mm parallel to weft: 2.2 m  
EN ISO 13 936-2 180 Newton

### Lightfastness

Note 6-7 ISO 105-B02

### Fastness to rubbing

Dry note 4-5 ISO 105-X12  
Wet note 4-5 ISO 105-X12

### Absorption

0.60/Class C (flat), 0.85/Class D (waved) EN ISO 354

### Airflow

2609 Pa s/m EN 29053

### Flame resistance

AS/NZS3837 class 3  
ASTM E84 Class A Unadhered  
ASTM E84 Class B Adhered  
BS 5852 crib 5 with treatment \*  
BS 5852 ignition source 3  
BS 5852 part 1  
EN 1021-1/2  
IMO FTP Code 2010 Part 8  
NF D 60 013  
ÖNORM B2/Q1  
SN 198 898 5.3 with treatment \*  
UNI 9175 1IM  
US Cal. Bull. 117-2013

Free from added flame retardant chemicals as standard

*\* To pass this test flame retardant treatment is necessary. We are looking into more environmentally friendly alternatives but for now, the external finisher may use a treatment containing halogen-based flame retardants*

### Raas

Design: Doshi Levien

Type: Upholstery

Composition: 92% new wool, 8% nylon

Yarn type: Worsted

Binding: Hopsack variant

Width: Approx. 142 cm, 56 inches

Weight: Approx. 765 g/lin.m, 24.7 oz/ly

Repeat: None

Colour difference may occur

Cleaning: Vacuum clean frequently, ideally every week. Remove stains as soon as they occur, with clean warm water or sparkling water. Extraction clean when necessary. Extraction cleaning might dissolve water-based glue. Pay attention to temperature and amount of cleaning fluid.

Disinfection, see kvadrat.dk

More info: Care and maintenance kvadrat.dk



10 year warranty



## CONTEXT

ENQUIRIES

info@contextgallery.com

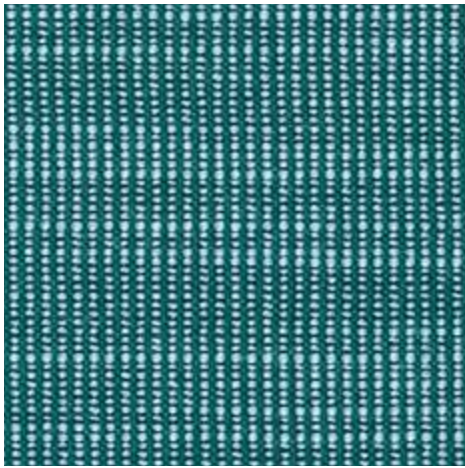
Tel. 404. 477. 3301

Tel. 800. 886.0867

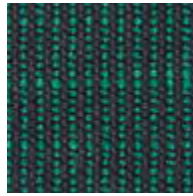
contextgallery.com

# kvadrat

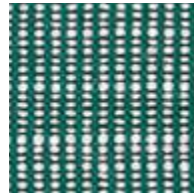
Raas



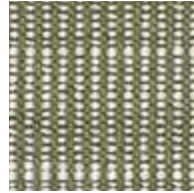
862



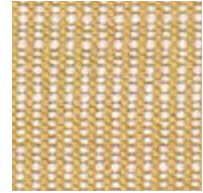
982



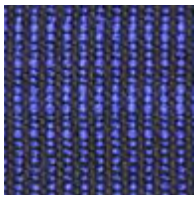
942



952



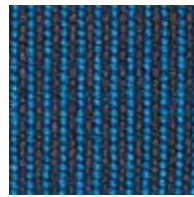
442



682



772



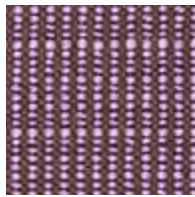
782



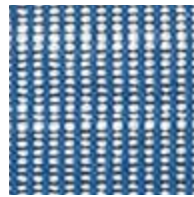
412



662



672

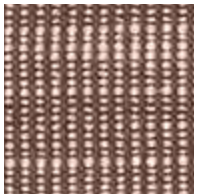


742

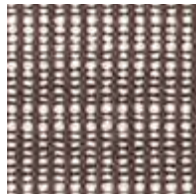


722

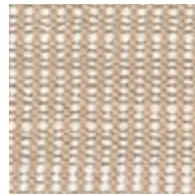
Raas



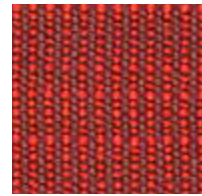
252



242



222



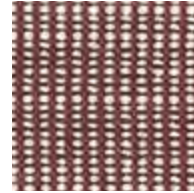
572



122



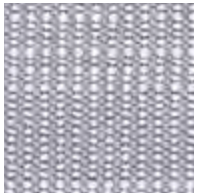
112



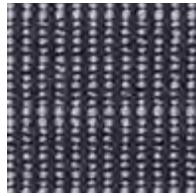
642



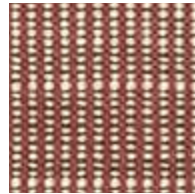
562



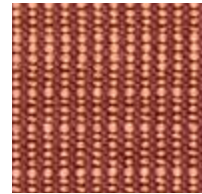
132



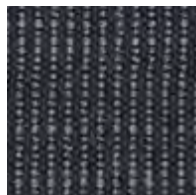
172



462



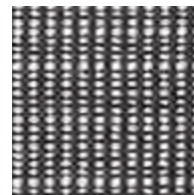
552



182



192



142



532