



Savanna

Abrasion

Approx. 45.000 Martindale rubs, EN ISO 12947

Abrasion test results exceeding ACT performance guidelines are not an indicator of product lifespan. Multiple factors affect fabric durability and appearance retention

Pilling

Note 3, EN ISO 12945

Seam slippage

Seam parallel to warp: 2.5 mm parallel to weft: 6.5 mm
EN ISO 13 936-2 180 Newton

Snagging

Note 1-2 (Note 1-4, 1 best note) ICI Test method FAB 29, Tumble-Box

Lightfastness

Note 5-7 ISO 105-B02

Fastness to rubbing

Dry note 4-5 ISO 105-X12
Wet note 4-5 ISO 105-X12

Flame resistance

AS/NZS 3837 class 2
BS 5852 crib 5 with treatment *
BS 5852 part 1 with treatment *
EN 1021-1/2
NF D 60 013 with treatment *
SN 198 898 5.3 with treatment *
UNI 9175 1IM with treatment *
US Cal. Bull. 117-2013

Free from added flame retardant chemicals as standard

** To pass this test flame retardant treatment is necessary. We are looking into more environmentally friendly alternatives but for now, the external finisher may use a treatment containing halogen-based flame retardants*

Savanna

Design: Aggebo & Henriksen

Type: Upholstery

Composition: 34% polyester, 31% new wool, 26% polyacrylic, 4% cotton, 3% nylon, 2% linen

Yarn type: Spun

Binding: Dobby

Width: Approx. 140 cm, 55 inches

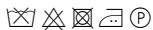
Weight: Approx. 681 g/lin.m, 22 oz/ly

Colour difference may occur

Cleaning: Vacuum clean frequently, ideally every week. Remove stains as soon as they occur, with clean warm water or sparkling water. Extraction clean when necessary. Extraction cleaning might dissolve water-based glue. Pay attention to temperature and amount of cleaning fluid.

Disinfection, see kvadrat.dk

More info: Care and maintenance kvadrat.dk



10 year
warranty



CONTEXT

ENQUIRIES

info@contextgallery.com

Tel. 404. 477. 3301

Tel. 800. 886.0867

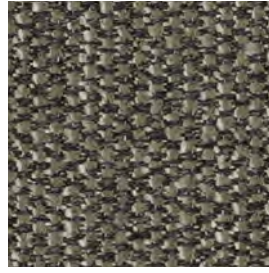
contextgallery.com

kvadrat

Savanna



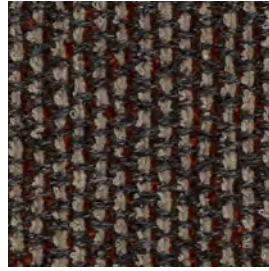
292



952



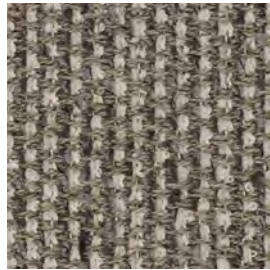
622



672



262



242

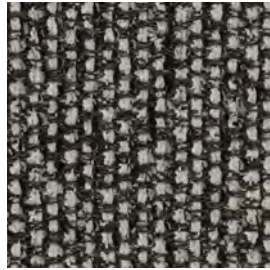
Savanna



222



442



152



192



202



122