

## Tonica 2

### Abrasion

Approx. 45.000 Martindale rubs, EN ISO 12947

*Abrasion test results exceeding ACT performance guidelines are not an indicator of product lifespan. Multiple factors affect fabric durability and appearance retention*

### Pilling

Note 4-5, EN ISO 12945

### Seam slippage

Seam parallel to warp: 4.0 mm parallel to weft: 3.5 mm  
EN ISO 13 936-2 180 Newton

### Lightfastness

Note 5-7 ISO 105-B02

### Fastness to rubbing

Dry note 4-5 ISO 105-X12  
Wet note 4-5 ISO 105-X12

### Airflow

487 Pa s/m EN 29053

### Flame resistance

AS/NZS 3837 class 2  
ASTM E84 Class A Adhered  
ASTM E84 Class B Unadhered  
BS 5852 crib 5 with treatment \*  
BS 5852 ignition source 3  
BS 5852 part 1  
EN 1021-1/2  
IMO FTP Code 2010 Part 8  
NF D 60 013  
NFPA 260  
ÖNORM B1/Q1  
UNI 9175 1IM  
US Cal. Bull. 117-2013

Free from added flame retardant chemicals as standard

*\* To pass this test flame retardant treatment is necessary. We are looking into more environmentally friendly alternatives but for now, the external finisher may use a treatment containing halogen-based flame retardants*

### Tonica 2

Design: Georgina Wright

Type: Upholstery

Composition: 100% new wool

Yarn type: Woolen

Binding: Hopsack

Width: Approx. 140 cm, 55 inches

Weight: Approx. 700 g/lin.m, 22.6 oz/ly

Colour difference may occur

Cleaning: Vacuum clean frequently, ideally every week. Remove stains as soon as they occur, with clean warm water or sparkling water. Extraction clean when necessary. Extraction cleaning might dissolve water-based glue. Pay attention to temperature and amount of cleaning fluid.

Disinfection, see kvadrat.dk

More info: Care and maintenance kvadrat.dk



10 year warranty



## CONTEXT

ENQUIRIES

info@contextgallery.com

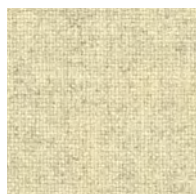
Tel. 404. 477. 3301

Tel. 800. 886.0867

contextgallery.com

# kvadrat

## Tonica 2



223



643



611



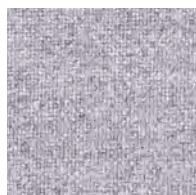
613



531



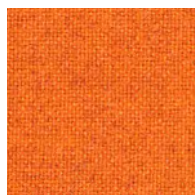
612



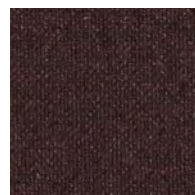
633



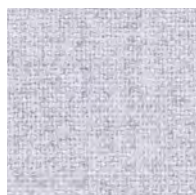
511



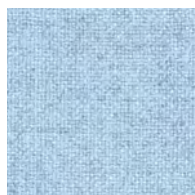
543



693



623



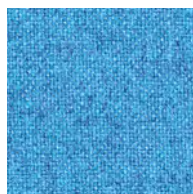
713



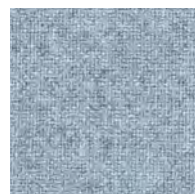
672



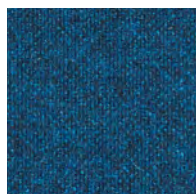
763



743



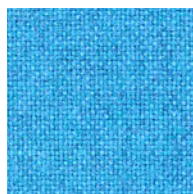
723



773

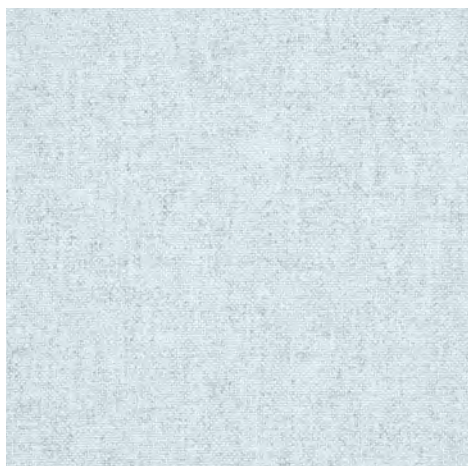


732

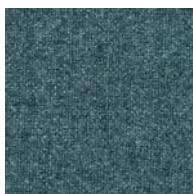


733

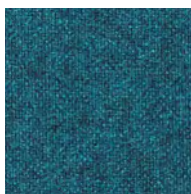
## Tonica 2



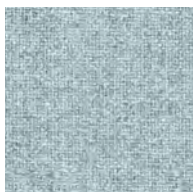
813



832



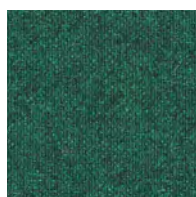
873



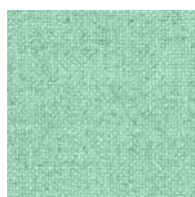
123



831



962



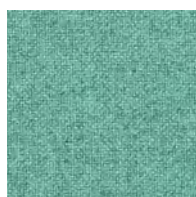
923



111



171



933



523



353



182



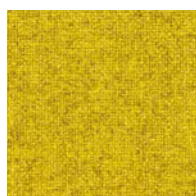
233



533



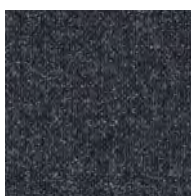
383



411



443



192



132