



Uniform Mélange

Abrasion

Approximately 100.000 Martindale rubs, EN ISO 12947

Pilling

Note 4, EN ISO 12945

Lightfastness

Note 6, ISO 105-B02

Flame resistance

EN 1021-1/2
BS 5852 part 1
DIN 4102-B2
US Cal. Tech. Bull. 117
IMO FTP Code part 8
BS 5852 Crib 5 with treatment

No use of brominated flame retardants

Quality benefits

The knitted construction makes it particularly well suited as upholstery for furniture with organic shapes

Foam backing added for easy upholstery and improved seam slippage

Very good lightfastness

Flame retardant

Benefits of wool

Wool is a renewable resource

Wool is very comfortable, because of its ability to absorb/give off humidity

Wool is flame retardant

Wool is biodegradable

Wool is naturally soil resistant

Wool ages with grace

Environmental benefits

Follows the EU Eco Label dye restrictions including AZO dye and heavy metal restrictions

No content of formaldehyde

Not bleached

Biodegradable spinning oil

Complies with REACH regulation

For further information
kvadrat.dk

Uniform Mélange

Design: Febrik design studio

Type: Upholstery

Composition: 68% wool, 22% polyamide, 10% polyester, 2mm foam

Yarn type: Worsted

Binding: Knit

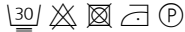
Width: 165 cm

Weight: App. 870 g/lin.m

Repeat: None

Cleaning: Vacuuming and dry cleaning

More info: Maintenance instruction—please see website



CONTEXT

ENQUIRIES

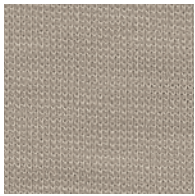
info@contextgallery.com

Tel. 404. 477. 3301

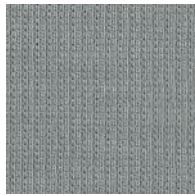
Tel. 800. 886.0867

contextgallery.com

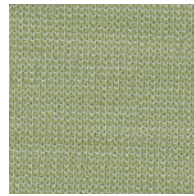
kvadrat FEBRIK



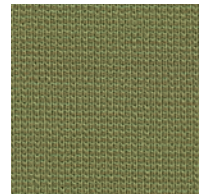
103



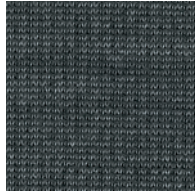
123



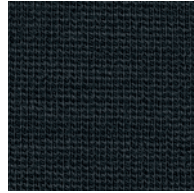
913



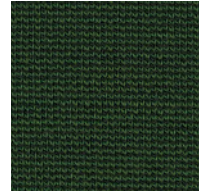
933



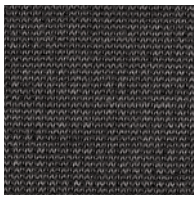
163



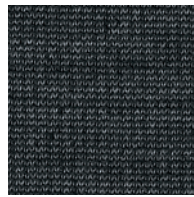
193



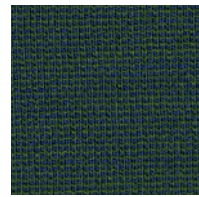
993



283



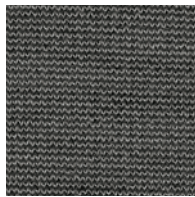
183



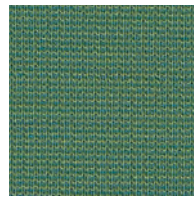
983



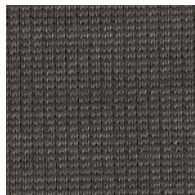
293



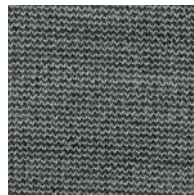
153



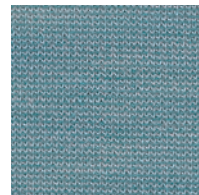
963



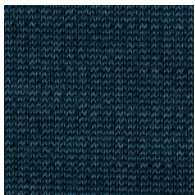
263



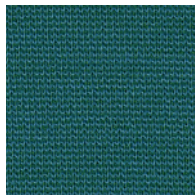
133



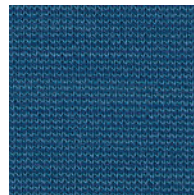
813



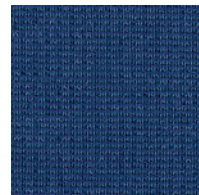
883



833

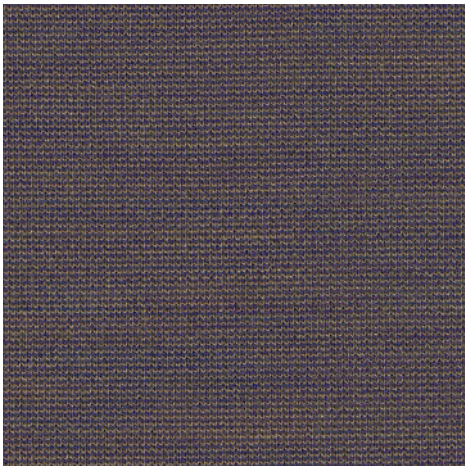


753

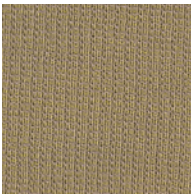


763

Uniform Mélange



333



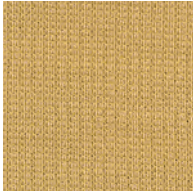
413



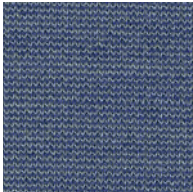
453



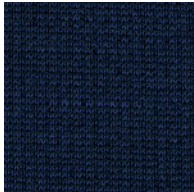
353



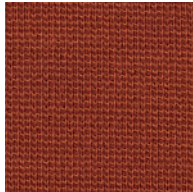
433



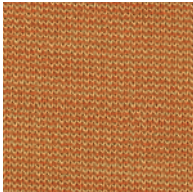
723



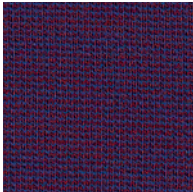
793



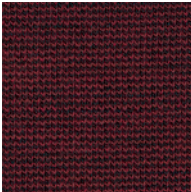
553



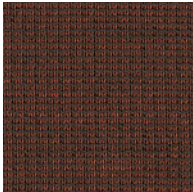
463



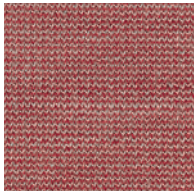
683



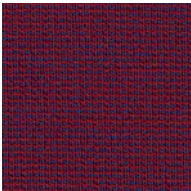
583



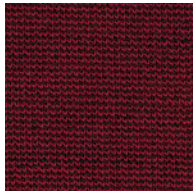
363



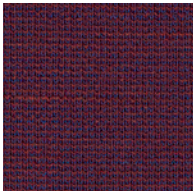
623



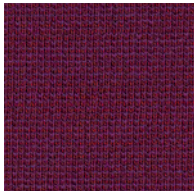
663



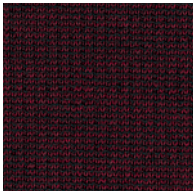
563



653



633



593