

KVADRAT/RAF SIMONS



VANIR

Design: Raf Simons

Type: Upholstery

Composition: 92% new wool, 8% nylon

Yarn type: Woollen

Binding: Dobby

Width: Approx. 140 cm, 55 inches

Weight: Approx. 760 g/lin.m, 24.4 oz/ly

Repeat: None

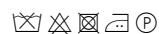
Cleaning: Vacuum clean frequently, ideally every week.

Remove stains as soon as they occur, with clean warm water or sparkling water. Extraction clean when necessary.

Extraction cleaning might dissolve water-based glue. Pay attention to temperature and amount of cleaning fluid.

Disinfection, see kvadrat.dk

More info: Care and maintenance kvadrat.dk



10^{year}
warranty



Abrasion

Approx. 100.000 Martindale rubs, EN ISO 12947

Pilling

Note 3-4, EN ISO 12945

Seam slippage

Seam parallel to warp: 3.0 mm parallel to weft: 3.0 mm

Lightfastness

Note 6-7 ISO 105-B02

Fastness to rubbing

Dry note 4-5 ISO 105-X12

Wet note 4-5 ISO 105-X12

CONTEXT

ENQUIRIES
info@contextgallery.com

Tel. 404 477 3301
Tel. 800 886 0867

contextgallery.com

Flame resistance

AS/NZS 3837 class 2
ASTM E84 Class B Adhered
BS 5852 Crib 5 with treatment*
BS 5852 part 1
EN 1021-1/2
IMO FTP Code 2010 part 8
NF D 60 013
SN 198 898 5.3 with treatment*
UNI 9175 1IM
US Cal. Bull. 117-2013
ÖNORM B1/Q1

Free from added flame retardant chemicals as standard

* To pass this test flame retardant treatment is necessary.

We are looking into more environmentally friendly alternatives but for now, the external finisher may use a treatment containing halogen-based flame retardants

ACT Guidelines Woven fabrics

Flammability

US Cal. Bull. 117-2013

Dry & Wet Crocking

Dry Crocking: Grade 4.5

Wet Crocking: Grade 4.5

Colour Fastness to Light

Grade 4.5 minimum 40 hours

Physical properties

Pilling Class 3-4

Breaking Strength warp 151 / weft 122 lbs.

Seam Slippage warp 140 / weft 129 lbs.

Abrasion

100.000 cycles Martindale – High Traffic / Public Spaces

Benefits of wool

Wool is a renewable resource

Wool is very comfortable because of its ability to absorb/
give off humidity

Wool is flame retardant

Wool is biodegradable

Wool is naturally soil resistant

Wool ages with grace

Quality benefits

Complies with Möblfakta

Very good abrasion

Very good lightfastness

Flame retardant

Environmental benefits

Follow the EU Ecolabel dye restrictions incl. AZO dye and heavy metal restrictions

No content of PFCs or 'PFAS'

REACH compliant

Californian Proposition 65 list compliant

LBC Red list compliant

Healthier Hospitals compliant

Green building certificates

Greenguard Gold: Low chemical emission

Environmental Product Declaration (EPD): Based on a LCA following EN 15804 and follow the standard of ISO 14040

Health Product Declaration (HPD): Declaring textile content and substance

Country of origin

United Kingdom

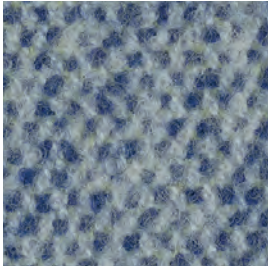
Warranty

10 years. See terms and conditions on kvadrat.dk

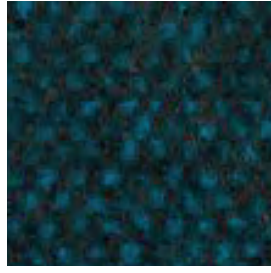
Kvadrat packaging and cardboard is recyclable. Cardboard material is FSC certified and / or contains recycled content.

For further information

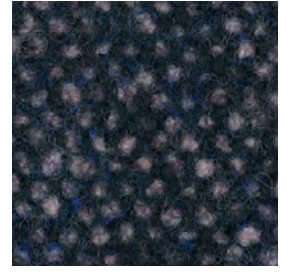
kvadrat.dk



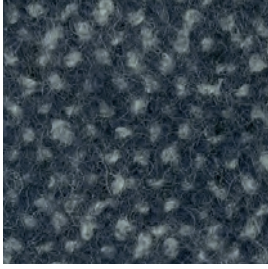
733



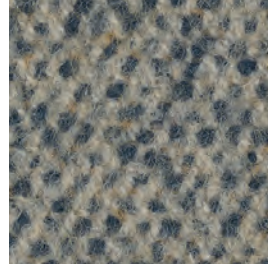
883



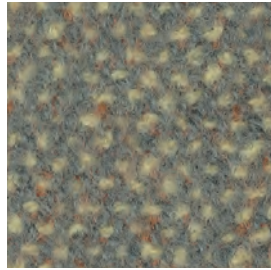
693



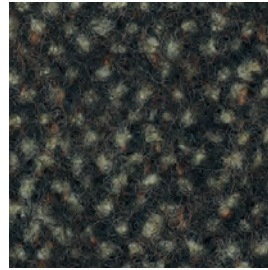
773



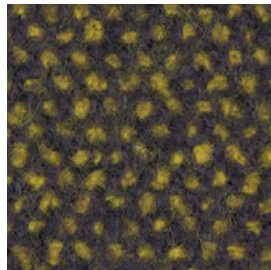
243



133

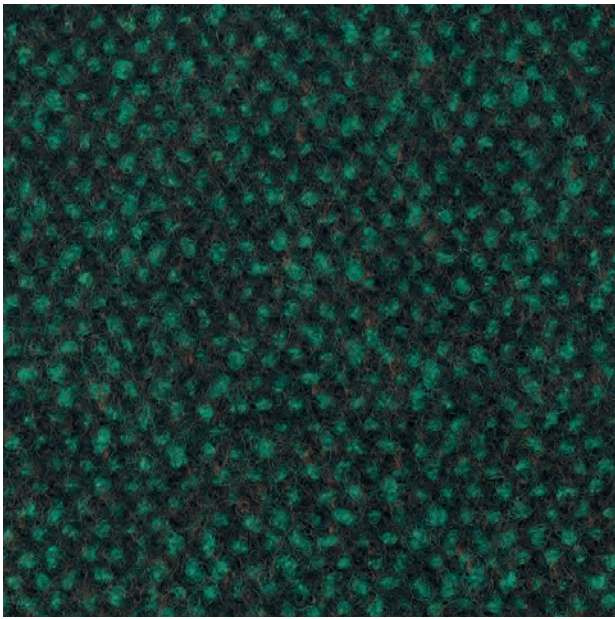


293

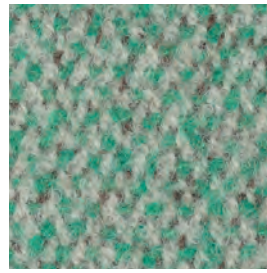


473

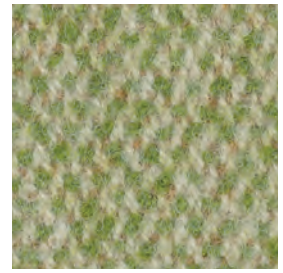
VANIR



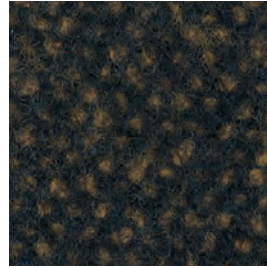
983



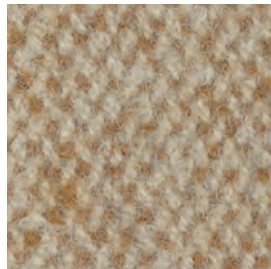
913



943



393



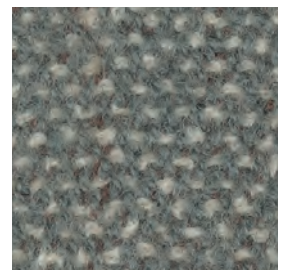
413



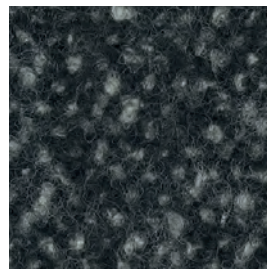
443



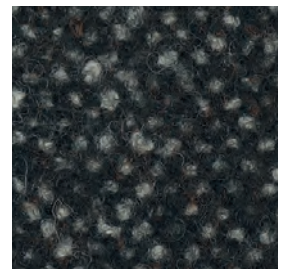
363



113



193



373