

Waterborn

Abrasion

Approx. 100.000 Martindale rubs, EN ISO 12947

Abrasion test results exceeding ACT performance guidelines are not an indicator of product lifespan. Multiple factors affect fabric durability and appearance retention

Pilling

Note 4-5, EN ISO 12945

Lightfastness

Note 4-7 ISO 105-B02

Fastness to rubbing

Dry note 3-5 ISO 105-X12

Wet note 3-5 ISO 105-X12

Airflow

16.700 Pa s/m EN 29053

Flame resistance

AS/NZS 3837 class 1

ASTM E84 Class A Adhered

ASTM E84 Class A Unadhered

BS 5852 crib 5 with treatment *

DIN 4102 B1 with treatment *

EN 1021-1

EN 1021-1/2 with treatment *

FMVSS 302 with treatment *

IMO FTP Code 2010: Part 8 with treatment *

ÖNORM B1/Q1 with treatment *

SN 198 898 5.3 with treatment *

UNI 9175 1IM with treatment *

US Cal. Bull. 117-2013

** To pass this test flame retardant treatment is necessary.*

We are looking into more environmentally friendly alternatives but for now, the external finisher may use a treatment containing halogen-based flame retardants

Waterborn

Design: Aggebo & Henriksen

Type: Upholstery

Composition: 85% polyester, 15% polyurethane

Yarn type: -

Binding: non-woven

Width: Approx. 140 cm, 55 inches

Weight: Approx. 600 g/lin.m, 19.4 oz/ly

Colour difference will occur

Cleaning: Vacuum clean frequently, ideally every week if fixed covers. Remove stains as soon as they occur, with clean warm water or sparkling water. Extraction clean when necessary. Extraction cleaning might dissolve water-based glue. Pay attention to temperature and amount of cleaning fluid.

Also washable at 60°C, half wash load. Drip drying.

Mount in moist condition. Shrinkage app. 2% at 60°C.

Be aware of increased shrinking and creasing the higher the temperature.

Disinfection, see kvadrat.dk

More info: Care and maintenance kvadrat.dk

60/ X X A P

10 year warranty



CONTEXT

ENQUIRIES

info@contextgallery.com

Tel. 404. 477. 3301

Tel. 800. 886.0867

contextgallery.com

kvadrat

Waterborn



523



543



603



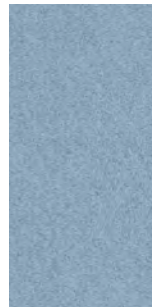
383



753



743



723



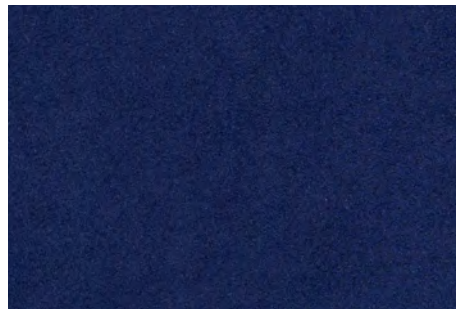
853



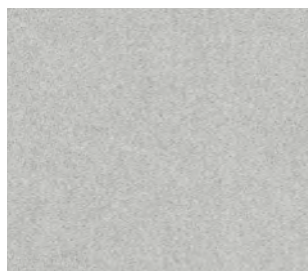
153



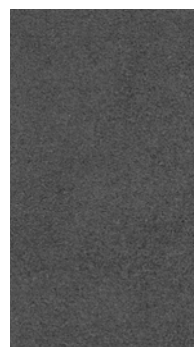
133



773



123



363



933

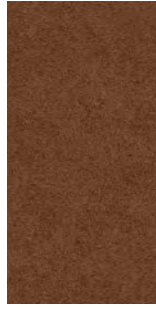
Waterborn



653



583



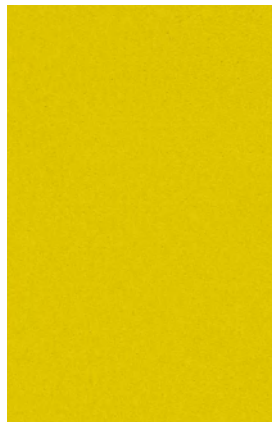
353



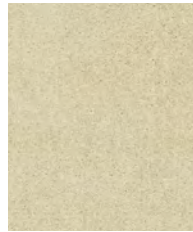
693



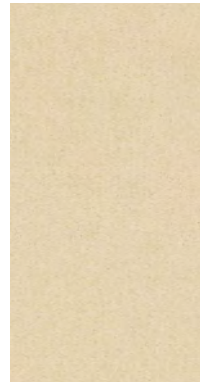
453



443



213



203



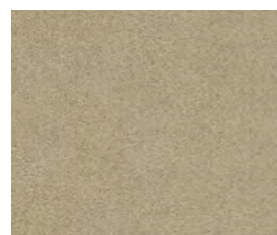
673



663



923

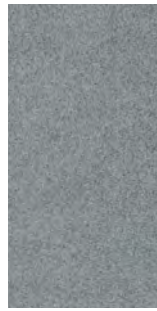


233

Waterborn



883



163



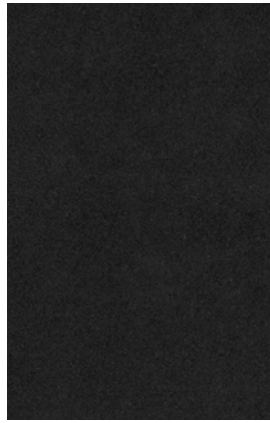
783



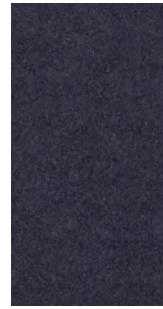
183



373



193



793



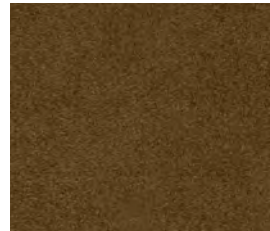
463



223



243



343



953



973