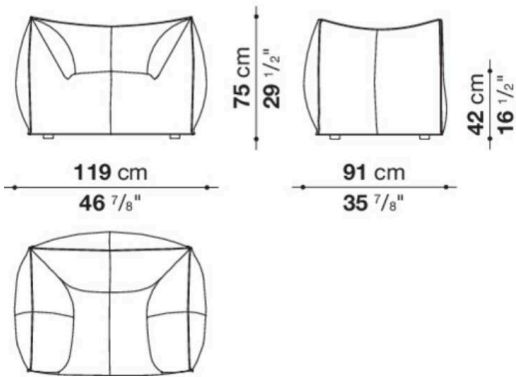


CONTEXT GALLERY

Le Bambole

DESIGNED BY MARIO BELLINI

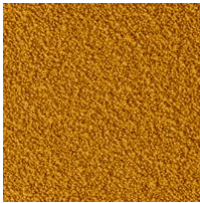
The Bambola armchair is part of Le Bambole series, originally designed in 1972, awarded with the Compasso d'Oro in 1979. Icon of timeless contemporaneity and one of the most effective expressions of Made in Italy excellence combining research and creative flair, Le Bambole have provided a very personal answer to the theme of seats. What makes them special is the apparent absence of a load bearing structure, the extreme naturalness of the shape, and the combination of comfort, softness and elasticity that their appearance conveys.



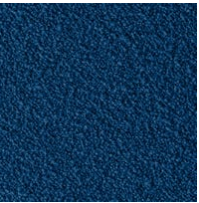
Sila 100



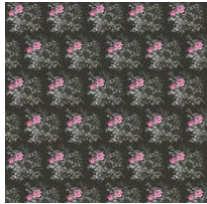
Sila 280



Sila 550



Sila 801



Manila Pink 580



Armchair

Sila 100 (White)



Armchair

Sila 550 (Ochre)



Armchair

Manila Pink 580



Armchair

Sila 280 (Dove Grey)



Armchair

Sila 801 (Bluette)

