

FLOS

Pochette, Grey - Specification Sheet by Rodolfo Dordoni, 2003

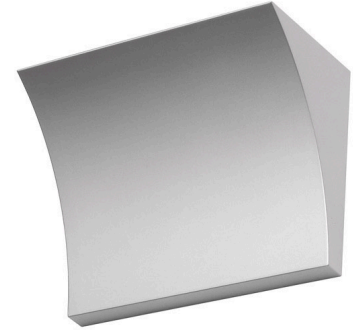
Mounting	Wall
Lamp (Bulb) Description	1 x 200W T3 Halogen (Included)
Environment	Indoor - Dry Location
Dimming	Phase-cut Dimming / Triac Type
Finish	Grey
Technical and Product Description	POCHETTE wall light providing indirect light. Pressure die-cast Zamak alloy structure, matte gray, bronze liquid paint or chrome-plated finish. Molded steel, galvanized white wall attachment containing the wall attachment system as well as the electrical devices. Pochette has a single dimmable light source in the traditional recessed series, satin-finish Pyrex glass protection.

Electrical

Voltage	120
Switching	NA
IP Rating	IP20

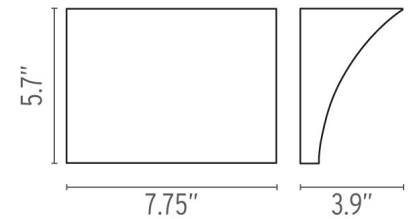
Physical

Construction Material	Zamak
Weight	3.5 lbs



● FU970020 Grey

Dimensional Image



Certifications



Lamping (Bulb)



200W T3 RSC Halogen

CONTEXT

ENQUIRIES
info@contextgallery.com

Tel. 404. 477. 3301
Tel. 800. 886.0867

contextgallery.com
contextcontract.com