

# CONTEXT GALLERY

## Ray

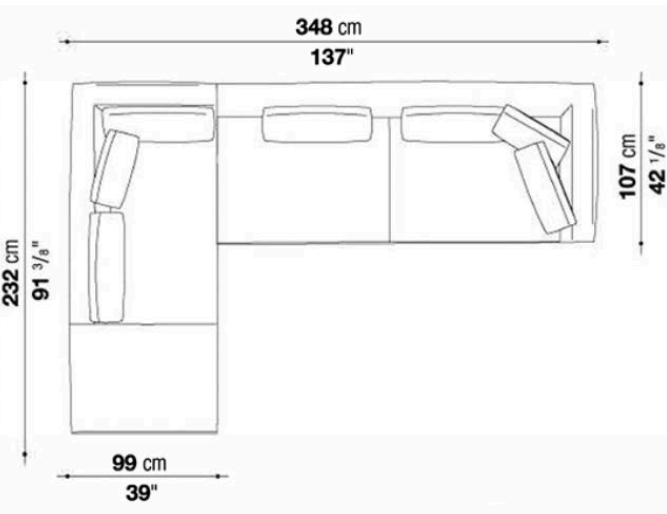
DESIGNED BY ANTONIO CITTERIO

A successful design strategy that achieves a balance of functional and aesthetic features, and entrusts the details to the right role: the seating system Ray is designed for a long life. Modular, with two depths, with an extensive compositional range that includes linear and corner elements and chaise longue, it stands out for the tailoring detail of the blanket stitch that runs along the profiles of the cover, both self-coloured and in contrasting hues.

Comes with:

RY72C (x4) - Ray back cushions 28"x19"

RY48C (x3) - Ray back cushions 19"x19"



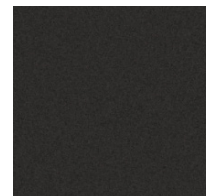
ENQUIRIES  
info@contextgallery.com  
Tel. 404 477 3301  
Tel. 800. 886.0867  
contextgallery.com



**Esopo 153**



**Stitching: Pearl grey 1011**



**Feet: Painted Black chromed**



**Astro 207**



**Stitching: Smoke grey**



**Sectional sofa**

Esopo 153, pearl grey stitching,  
Black chromed frame



**Sectional sofa**

Astro 207, Smoke grey stitching,  
Black Chromed Frame

