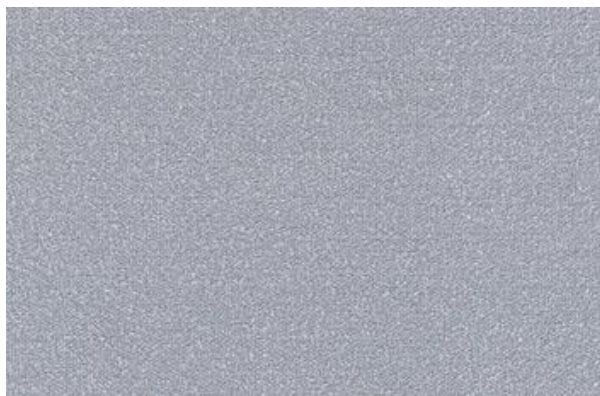


SAHCO

1831

ENQUIRIES
info@contextgallery.com
Tel. 404. 477. 3301
Tel. 800. 886.0867
contextgallery.com

**Acca**

Type: Upholstery

Composition: 25% recycled polyester, 35% viscose, 33% recycled cotton, 7% recycled polyacrylic

Yarn type: Staple, Filament

Binding: Jacquard

Width: Approx. 140 cm, 55 inches

Weight: Approx. 800 g/lin.m, 25.8 oz/ly

Repeat: None

Colour differences may occur.

Cleaning: Vacuum clean frequently, ideally every week.

Remove stains as soon as they occur, with clean warm water or sparkling water. Extraction clean when necessary.

Extraction cleaning might dissolve water-based glue. Pay attention to temperature and amount of cleaning fluid.

Disinfection, see www.kvadrat.dk/en/sahco



10 year
warranty

**Abrasion**

Approx. 50.000 Martindale rubs, EN ISO 12947

Abrasion test results exceeding ACT performance guidelines are not an indicator of product lifespan. Multiple factors affect fabric durability and appearance retention.

Pilling

Note 3, EN ISO 12945

Seam slippage

Seam parallel to warp: 4.0 mm

parallel to weft: 3.0 mm

EN ISO 13 936-2 180 Newton

Lightfastness

Note 5-6 ISO 105-B02

Fastness to rubbing.

Dry note 4-5 ISO 105-X12

Wet note 3-5 ISO 105-X12

Flame resistance

BS 5852 Crib 5 with treatment *

BS 5852 part 1 with treatment *

EN 1021-1/2

US Cal. Bull. 117-2013

Free from added flame retardant chemicals as standard.

** To pass this test flame retardant treatment is necessary.*

We are looking into more environmentally friendly alternatives but for now, the external finisher may use a treatment containing halogen-based flame retardants.

SAHCO

1831

ENQUIRIES
info@contextgallery.com
Tel. 404. 477. 3301
Tel. 800. 886.0867
contextgallery.com

ACT Guidelines Woven fabrics.**Flammability**

US Cal. Bull. 117-2013

Dry & Wet Crocking AATCC 8

Dry Crocking: Grade 5.0

Wet Crocking: Grade 3.0-5.0

Colour Fastness to Light AATCC 16

Grade 4.0-5.0 minimum 40 hours

Physical properties

Pilling ASTM D3511 Class 3

Breaking Strength ASTM D5034 warp 312 / weft 97 lbs

Seam Slippage ASTM D4034 warp 158,0 / weft 43,5 lbs

Abrasion ASTM D4966

50.000 cycles Martindale – High Traffic

Environmental benefits

Recycled content

REACH compliant

Californian Proposition 65 list compliant

LBC Red list compliant

Green building certificates

Greenguard Gold: Low chemical emission

Health Product Declaration (HPD): Declaring textile content and substance

Country of origin

Italy

Launch

2023

Warranty

10 years. See terms and conditions on kvadrat.dk

Kvadrat packaging and cardboard is recyclable. Cardboard material is FSC certified and / or contains recycled content.

For further information

www.kvadrat.dk/en/sahco