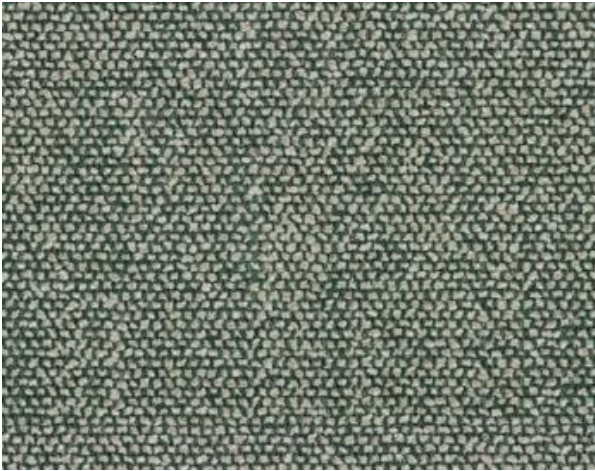


SAHCO

1831



Moss

Type: Upholstery

Composition: 52% cotton, 14% acrylic, 6% linen, 3% polyamide, 3% polyester, 2% viscose

Yarn type: Staple / Filament

Binding: Jacquard

Width: Approx. 138 cm, 54 inches

Weight: Approx. 920 g/lin.m, 30 oz/ly

Repeat: None

Colour difference may occur

Cleaning: Vacuum clean frequently, ideally every week.

Remove stains as soon as they occur, with clean warm water or sparkling water. Extraction clean when necessary. Extraction cleaning might dissolve water based glue. Pay attention to temperature and amount of cleaning fluid.

Disinfection, see www.kvadrat.dk/en/sahco



2 year
warranty



Abrasion

Approx. 50.000 Martindale rubs, EN ISO 12947

Abrasion test results exceeding ACT performance guidelines are not an indicator of product lifespan. Multiple factors affect fabric durability and appearance retention

Pilling

Note 4-5, EN ISO 12945

Lightfastness

Note 5-7 ISO 105-B02

Fastness to rubbing

Dry note 4-5 ISO 105-X12

Wet note 4-5 ISO 105-X12

Flame resistance

AS/NZS 3837 class 2

BS 5852 Crib 5 with treatment *

BS 5852 Part 1

EN 1021-1/2

US Cal. Bull. 117-2013 with Cal. 117 compliant interliner

** To pass this test flame retardant treatment is necessary. We are looking into more environmental friendly alternatives but for now the external finisher may use a treatment containing halogen based flame retardants.*

ACT Guidelines Woven fabrics

Flammability

US Cal. Bull. 117-2013

Dry & Wet Crocking AATCC 8

Dry Crocking: Grade 4.5

Wet Crocking: Grade 4.5

Colour Fastness to Light AATCC 16

Grade 4 minimum 40 hours

SAHCO

1831

Physical properties

Pilling ASTM D3511 Class 4.5

Breaking Strength ASTM D5034 warp 224 / weft 122 lbs

Seam Slippage ASTM D4034 warp 89 / weft 52 lbs

Abrasion ASTM D4966

50.000 cycles Martaindale – High Traffic

Environmental benefits

Follow the EU Ecolabel dye restrictions incl. AZO dye
and heavy metal restrictions

No use of halogen based flame retardants (incl. brominated
and chlorinated)

REACH compliant

Californian Proposition 65 list compliant

LBC Red list compliant

Green building certificates

Greenguard Gold: Low chemical emission

Environmental Product Declaration (EPD): Based on a aLCA
following EN 15804 and follow the standard of ISO 14040

Country of origin

Belgium

Launch

2019

Warranty

2 years. See terms and conditions on kvadrat.dk

Kvadrat packaging and cardboard is recyclable. Cardboard
material is FSC certified and / or contains recycled content.

For further information

www.kvadrat.dk/en/sahco

CONTEXT

ENQUIRIES
info@contextgallery.com

Tel. 404. 477. 3301
Tel. 800. 886.0867

contextgallery.com