



## Spindle

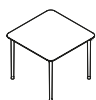
Designer: Gordon Guillaumier  
Year: 2014

A collection of tables characterized by tapered legs realized through die casting of aluminium and linked with the thin rounded top that gives a pleasant softness and prettiness. The removable legs and its stackability are two characteristics that make it particularly suitable for the contract use, while the complete range of tops dimensions, square or rectangular, allows to satisfy different needs both in collective and residential environments: like writing desks, dining or meeting tables.

Developed by Tacchini in Italy

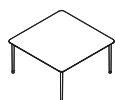
## Dimensions (cm)

Cod. 1SPI90Q



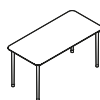
W 90 D 90 cm  
H 73 cm

Cod. 1SPI145Q



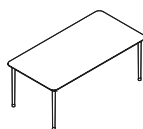
W 145 D 145 cm  
H 73 cm

Cod. 1SPI145



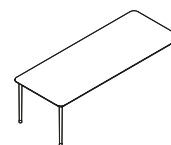
W 145 D 70 cm  
H 73 cm

Cod. 1SPI185



W 185 D 95 cm  
H 73 cm

Cod. 1SPI240



W 240 D 95 cm  
H 73 cm

CAD Files:  
3D (.dwg, .3ds)  
2D (.dwg)

Download CAD  
files at [tacchini.it/en/downloads](http://tacchini.it/en/downloads)

## CONTEXT

ENQUIRIES  
[info@contextgallery.com](mailto:info@contextgallery.com)

Tel. 404. 477. 3301  
Tel. 800. 886.0867

[contextgallery.com](http://contextgallery.com)  
[contextcontract.com](http://contextcontract.com)

---

**Materials description**

Base: die-cast aluminium Ø 60 mm powder-coated painted.

---

Under top table: MDF 25 mm (just for Spindle table 240 × 95 cm light fiberboard with MDF frame 25 mm).

---

Top: glass or MDF 8 mm ash plated.

---

**Base**

T02 RAL 9016  
White



T03 RAL 7016  
Grey

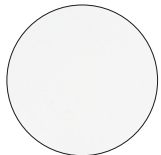


T11 RAL 2011  
Orange



T19 RAL 5021  
Blue

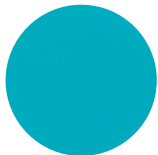
---

**Top**

T38  
White Painted Glass



T39  
Grey Painted Glass



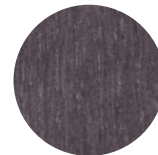
T40  
Blue Painted Glass



T41  
Smoked Mirror



T43  
Dark Walnut



T49  
Grey