



Sesann Armchair

Designer: Gianfranco Frattini  
Year: (1970) 2015

A system of sofas and armchairs that create a feeling of sensual warm, with their soft, comfortable shapes which are definitely the protagonists of space also due to the importance of volumes. In addition to this aesthetic and physical feelings, there is the peculiarity of its embracing structure, which can be in metallic chromed or painted tubular. The feet are made with ash wood dyed grey or walnut. Different upholsteries are available, leathers or fabrics, in order to create various feelings and chromatic combinations with the structure.

Developed by Tacchini in Italy

**CONTEXT**

ENQUIRIES  
info@contextgallery.com  
Tel. 404. 477. 3301  
Tel. 800. 886.0867  
contextgallery.com

Dimensions (cm)

Cod. OSES110



W 110 D 94 cm  
H 67 cm  
H seat 38 cm

Non-removable  
covers

CAD Files:  
3D (.dwg, .3ds)  
2D (.dwg)

Download CAD  
files at tacchini.it/  
en/downloads

Materials description

Internal frame: cold foam with backrest insert and seat in polyurethane foam.  
Seat in 18 mm thick poplar plywood and solid fir wood with elastic belts.

Base: tubular metal frame diam 20 mm powder-coated painted or chromed.

Feet: open pore stained solid ash wood.

Upholstery: not removable.

Chromed structure



T23  
Polished Chromed



T24  
Satin Chrome



T25  
Matt Champagne Gold



T27  
Matt Black Chromed

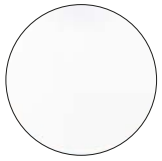


T28  
Polished Black Chromed



T64  
Brush Matt Copper

Painted structure



T01 RAL 9010  
White



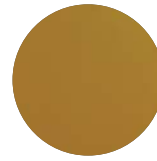
T07 RAL 9011  
Black



T11 RAL 2011  
Orange



T61 RAL 6014  
Green



T62 RAL 1005  
Ochre



T63 RAL 5002  
Blue

Feet



T43  
Dark Walnut



T49  
Grey

Suggested upholsteries



Early



Eranthe



Lars



Aniline Leather

## CONTEXT

ENQUIRIES  
info@contextgallery.com

Tel. 404. 477. 3301  
Tel. 800. 886.0867

contextgallery.com