



Sesann

Designer: Gianfranco Frattini
Year: (1970) 2015

A reissue of a historic design by Gianfranco Frattini, Sesann is a collection of sofas and armchairs with soft, cosy forms that evoke feelings of warmth and sensuality, thanks to the tubular metal frame, which acts as an architectural structure, enveloping, containing and accentuating the cushioning. Sesann commands its space with its bold volumes and elegant, sophisticated design. With a choice of leather or fabric coverings to create striking combinations of colours and textures between the cushions, frame and ash wood feet.

Developed by Tacchini in Italy

CONTEXT

ENQUIRIES
info@contextgallery.com

Tel. 404.477.3301
Tel. 800.886.0867

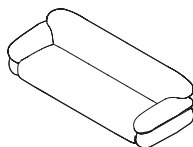
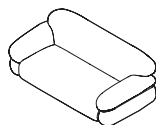
contextgallery.com

Dimensions (cm)

Cod. OSES110

Cod. OSES180

Cod. OSES240



W 110 D 94 cm
H 67 cm
H seat 38 cm

W 180 D 94 cm
H 67 cm
H seat 38 cm

W 240 D 94 cm
H 67 cm
H seat 38 cm

Non-removable
covers

CAD Files:
3D (.dwg, .3ds)
2D (.dwg)

Download CAD
files at tacchini.it/en/downloads

Materials description

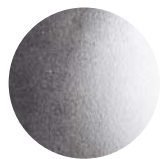
Internal frame: cold foam with backrest insert and seat in polyurethane foam.
Seat in 18 mm thick poplar plywood and solid fir wood with elastic belts.

Base: painted or chromed metal.

Feet: walnut or gray stained ash.

Upholstery: not removable.

Chromed structure



T23
Polished Chromed



T24
Satin Chrome



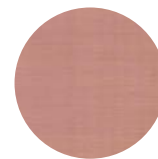
T25
Matt Champagne Gold



T27
Matt Black Chromed



T28
Polished Black Chromed



T64
Brush Matt Copper

Painted structure



T01 RAL 9010
White



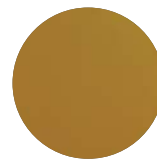
T07 RAL 9011
Black



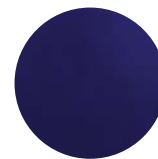
T11 RAL 2011
Orange



T61 RAL 6014
Green



T62 RAL 1005
Ochre



T63 RAL 5002
Blue

Feet



T43
Dark Walnut



T49
Grey

Suggested upholsteries



Early



Eranthe



Lars



Aniline Leather

CONTEXT

ENQUIRIES
info@contextgallery.com

Tel. 404. 477. 3301
Tel. 800. 886.0867

contextgallery.com