



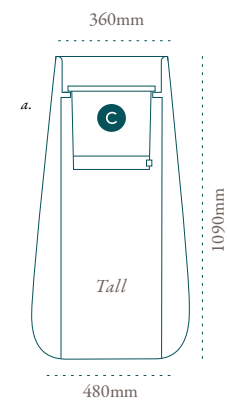
Tuber  
by Haldane Martin



Haldane Martin's Tuber, as the name suggests, is inspired by the tubular shape of many plants and bulbs that lie just beneath the surface of the soil. It is almost as if the planter brings this sub-terraneous shape out to represent the life support system of the plant for all to see – life springing forth and nourished from a tubular root structure.

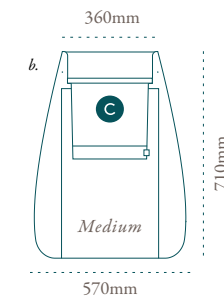


## SPECIFICATIONS



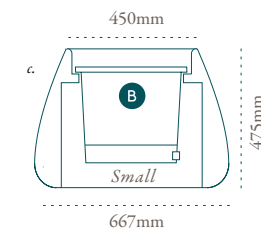
TUB10W/S

wood or all stone  
weight: W 36kg / S 58kg  
inch: 18.9x14.1x42.9"



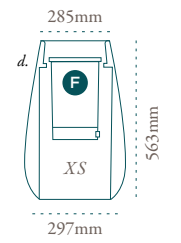
TUB07W/S

wood or all stone  
weight: 28kg / 48kg  
inch: 22.4x14.1x27.9"



TUB04W/S

wood or all stone  
weight: W 27kg / S 45kg  
inch: 26.3x17.7x18.7"

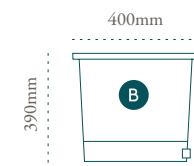


TUB05W/S

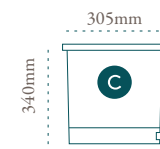
wood or all stone  
weight: W 15kg / S 25kg  
inch: 11.7x11.2x22.1"



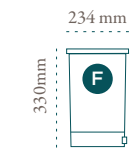
## LINERS



round  
soil: 77 gal | 27 l  
water: 1.6 gal | 6 l



round  
soil: 3.6 gal | 14 l  
water: 0.8 gal | 3 l



round  
soil: 4.27 gal | 16.17 l  
water: 0.92 gal | 3.51 l

## CONTEXT

ENQUIRIES  
info@contextgallery.com

Tel. 404. 477. 3301  
Tel. 800. 886.0867

contextgallery.com

# Finish Options



*Black*

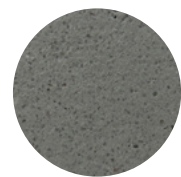
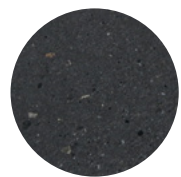
*Sandstone*

*Terracotta*

*White*

*Brown*

*Grey*



*natural wood*



*oiled wood*

## CONTEXT

ENQUIRIES  
 info@contextgallery.com  
 Tel. 404. 477. 3301  
 Tel. 800. 886.0867  
 contextgallery.com

# Liners

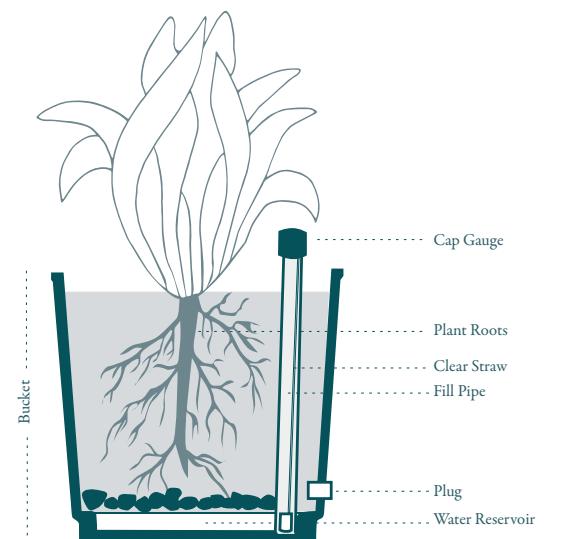


## “Self-Watering” Liners

All Indigenous planters come with a liner for planting. The drawings show the sizes and capacities. These liners have been designed to house plants in proportion to the size of the planters. They contain a water reservoir at the base into which the roots grow. Using the process of “capillary action” the water is pushed up into the soil.

Water levels in the reservoir can be measured using the cap gauge and the liner has a plug which must be removed if the planter is exposed rainfall.

The liners usually need 14 weeks to integrate with the root system during which watering should be done the normal way onto the soil. Thereafter in typical conditions the reservoir only needs filling once or twice a month



**Always use the planter in conjunction with the liner and remove the plug at the base of the liner and the base of the planter if the planters are going to receive rainfall.**

