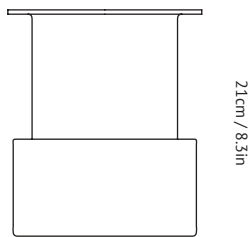


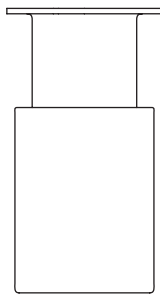
TRICOLORE SH1 – SH3

BY SEBASTIAN HERKNER
2017



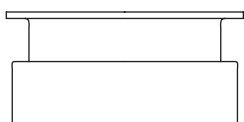
21cm / 8.3in

18cm / 7.1in



26.4cm / 10.4in

14.4cm / 5.7in



10.6cm / 4.2in

22cm / 8.7in

Product category	Accessory
Production Process	The Tricolore vases are made from coloured bohemian glass. The vases are mouth-blown and handmade by skilled craftsmen.
Environment	Indoor
Material	Mouth-blown colored bohemian glass
Dimensions (cm/in)	SH1: Inner vase: Ø: 18.0cm/7.1in, H: 20.0cm/7.9in. Bottom vase: Ø: 17.0cm/6.7in, H: 9.0cm/3.5in. SH2: Inner vase: Ø: 14.0cm/5.5in, H: 25.0cm/9.8in. Bottom vase: Ø: 13.0cm/5.1in, H: 17.0cm/6.7in. SH3: Inner vase: Ø: 22.0cm/8.7in, H: 9.0cm/3.5in. Bottom vase: Ø: 21.0cm/8.3in, H: 6.0cm/2.36in.
Weight (kg)	SH1: 3.1kg SH2: 3.3kg SH3: 3.3kg
Colours	SH1: Malachite & Cornaline SH2: Amber & Lapis SH3: Topaz & Rubis
Cleaning Instructions	Hand wash is recommended

CONTEXT

ENQUIRIES
info@contextgallery.com

Tel. 404. 477. 3301
Tel. 800. 886.0867

contextgallery.com
contextcontract.com