

# Utrecht Chair

Designed by Gerrit Rietveld

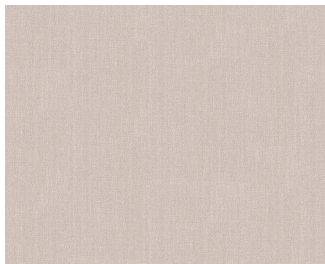
Utrecht was Rietveld’s first upholstered lounge chair and, like all of his furniture designs, remains a remarkable study in planes and volumes. Cassina acquired the rights to produce Rietveld’s furniture in 1971 and reissued the Utrecht chair in 1988 on the occasion of the centenary of Rietveld’s birth.

The chair features a deep rectilinear seat and back that is cleverly canted so that the resulting angle appears to rest on the floor. The gravity defying upward cant of the front seat is supported by upholstered front legs that form a right angle and continue toward the chair’s back, now functioning as armrests.

Utrecht is composed of an interior steel support frame covered in polyurethane foam with polyester padding covered in fabric finished with a signature blanket stitch.

## CONTEXT GALLERY

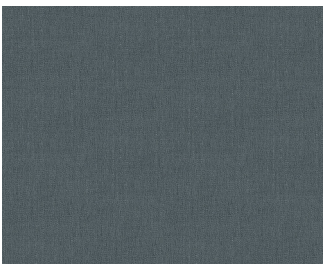
ENQUIRIES  
info@contextgallery.com  
  
Tel. 404. 477. 3301  
Tel. 800. 886.0867  
  
contextgallery.com



13L631 Lipari Cenere



13O045 Osaka Anthracite



13L640 Lipari Jeans



13O044 Osaka Argento

### available combinations

- Upholstery in Lipari Cenere with Natural blanket stitch
- Upholstery in Lipari Jeans with Natural blanket stitch
- Upholstery in Osaka Anthracite with Natural blanket stitch
- Upholstery in Osaka Argento with Natural blanket stitch



### available compositions

